



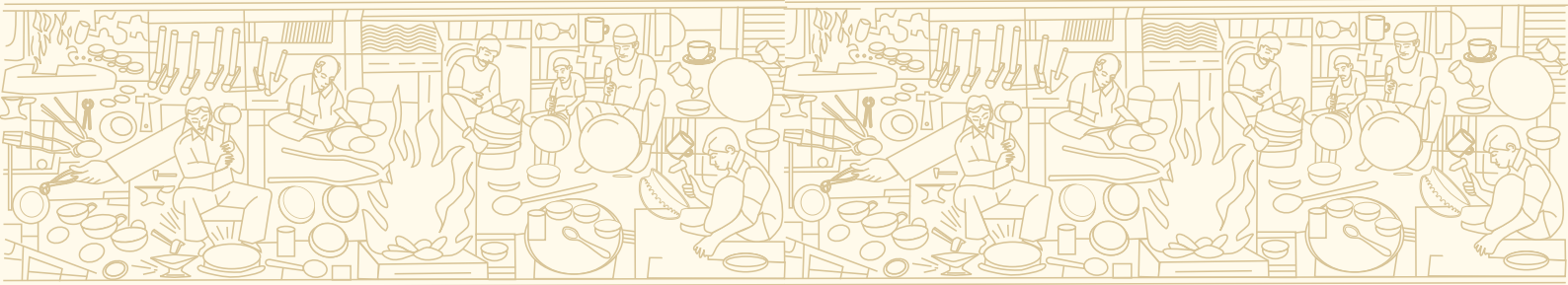
# KANSYAM

कांस्यम् बुद्धि वर्धकम्









## About Kansyam

Bringing Bronze Back to Life. Since 1990. Kansyam is a pioneering brand dedicated to the revival of pure Kansa (bronze) kitchenware, serveware, religious items, and health-focused products. Every piece is a blend of ancient wisdom and modern craftsmanship – made to enrich homes with health, tradition, and timeless elegance.

Founded in 1990 by Shri Amit Bhogilal Shah, Kansyam began with a simple, powerful vision: To make the benefits of bronze available to every household.

Shri Shah was a man ahead of his time – one who truly understood the depth of the Sanskrit phrase “बुद्धि वर्धकम्” (Buddhi Vardhakam) – “*Kansa sharpens intellect.*”

Under his leadership, Kansyam grew into a trusted name rooted in Ayurvedic tradition, cultural heritage, and scientific validation.

## Certified Excellence

Our products are built on a foundation of quality, purity, and trust. Every Kansyam creation is:

- US FDA Approved
- NABL Tested
- RoHS Compliant

We take pride in offering products that are not only culturally significant but also globally certified for safety, health, and sustainability.

**SGS**

Report No.: **1656001022** Issue Date: **14/06/2025**

**Sample Photo**

**1656001022**

**SGS** authenticates the product on original report only.

**Tested Report**

**SGS**

Report No.: **1656001022** Issue Date: **14/06/2025**

**Sample Photo**

**1656001022**

**SGS** authenticates the product on original report only.

**Tested Report**

**SGS**

Report No.: **1656001022** Issue Date: **14/06/2025**

**Sample Photo**

**1656001022**

**SGS** authenticates the product on original report only.

**Tested Report**

**SGS**

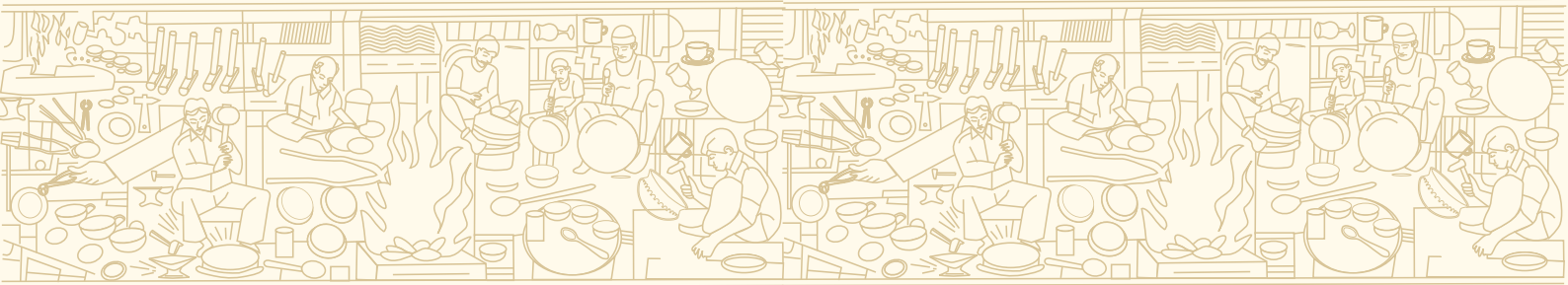
Report No.: **1656001022** Issue Date: **14/06/2025**

**Sample Photo**

**1656001022**

**SGS** authenticates the product on original report only.

**Tested Report**



KANSYAM

## Our Mission

To assist individuals and families in achieving a higher quality of living, while enhancing the well-being of the wider community — by transforming bronzeware into an experience, a culture, a way of life.

## Our Vision

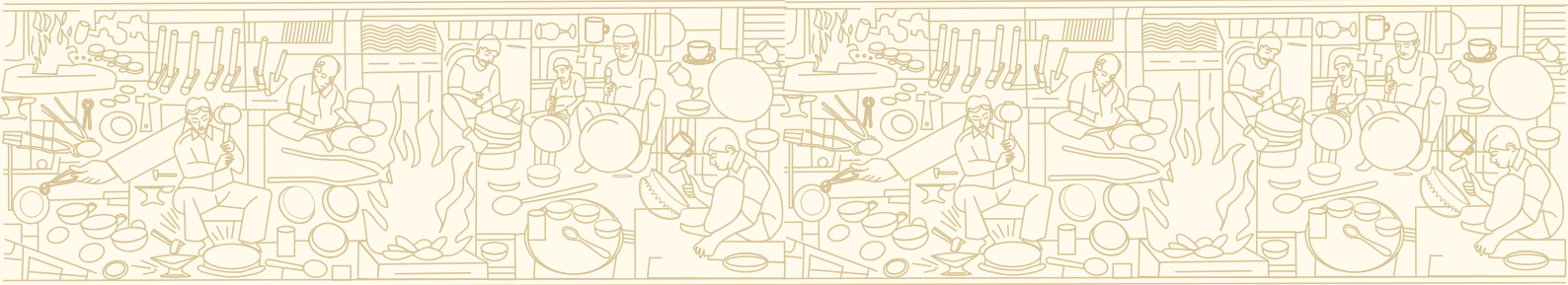
To continually evolve the Kansyam brand to reflect the depth of our heritage, while aligning with a refined, modern lifestyle. We aim to communicate the full breadth of what Kansyam represents — a seamless blend of tradition, health, craftsmanship, and innovation.

**Kansyam is not just about products. It's about a purpose.**

**A way of living. A legacy that lives on — one bronze piece at a time.**

\*Available in matte (pure RO finish) and glossy (may dull over time); no coating used.





## BEST OLD BRONZE UTENSILS NOW AVAILABLE IN THE NEW ERA

IN AN AGE DOMINATED BY FAST FOOD, PLASTICS, AND DISPOSABLES, THERE'S A QUIET REVIVAL HAPPENING IN INDIAN KITCHENS AND HOMES—A RETURN TO THE ROOTS WITH PURE BRONZE (KANSA) UTENSILS, DEEPLY ROOTED IN AYURVEDIC WISDOM AND CULTURAL HERITAGE.

BRONZE UTENSILS, ONCE RESERVED FOR ROYALTY, SAGES, AND FESTIVE OCCASIONS, ARE NOW BEING REDISCOVERED BY THE MODERN GENERATION. THESE AGE-OLD VESSELS ARE MAKING A COMEBACK—NOT JUST AS RELICS OF THE PAST, BUT AS EVERYDAY HEALTH-ENHANCING ESSENTIALS.

## WHY BRONZE IS MAKING A COMEBACK

**TIME-TESTED TRADITION:** USED FOR OVER 5,000 YEARS IN INDIAN, GREEK, CHINESE, AND ROMAN CULTURES.

**AYURVEDA-APPROVED:** KNOWN TO BALANCE THE THREE DOSHAS (VATA, PITTA, KAPHA), BOOST IMMUNITY, AND AID DIGESTION.

**SCIENTIFICALLY SMART:** ANTI-BACTERIAL, DURABLE, AND NATURALLY ALKALIZING.

## CLASSIC BRONZE UTENSILS REIMAGINED TODAY

### 1. BRONZE THALI SET

THE TRADITIONAL INDIAN THALI—NOW CRAFTED IN PURE LEAD-FREE BRONZE. A FULL SET WITH PLATE, BOWLS, SPOON, AND TUMBLER BRINGS BACK THE JOY OF MINDFUL EATING WITH EVERY MEAL.

### 2. BRONZE DRINKING GLASSES

STORING AND DRINKING WATER IN BRONZE HELPS IMPROVE DIGESTION AND BOOSTS IMMUNITY. A PERFECT REPLACEMENT FOR PLASTIC BOTTLES AND GLASSES.

### 3. BRONZE URLI & SERVING BOWLS

BLENDING TRADITION WITH ELEGANCE, BRONZE URLI BOWLS SERVE BOTH AESTHETIC AND CULINARY PURPOSES—IDEAL FOR SERVING CURRIES OR DECORATING SPACES.

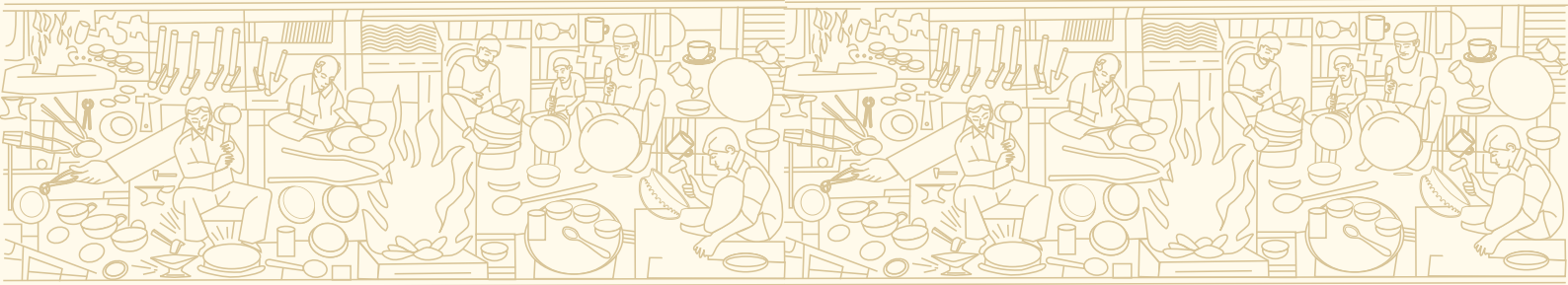
### 4. BRONZE POOJA PLATES & LAMPS

THESE AREN'T JUST UTENSILS—THEY'RE CARRIERS OF CULTURE. USE IN DAILY RITUALS OR FESTIVALS TO BRING SACRED ENERGY INTO YOUR HOME.

### 5. COOKING VESSELS (FOR SLOW COOKING)

SOME BRANDS NOW OFFER BRONZE KADHAIS AND POTS SUITED FOR SLOW-COOKING DALS, RASAM, AND EVEN TRADITIONAL SWEETS LIKE PAYASAM.





## MODERN DESIGN MEETS ANCIENT WISDOM

TODAY'S BRONZE UTENSILS ARE:

LEAD-FREE AND FOOD-SAFE POLISHED OR MATTE-FINISHED FOR EASY MAINTENANCE

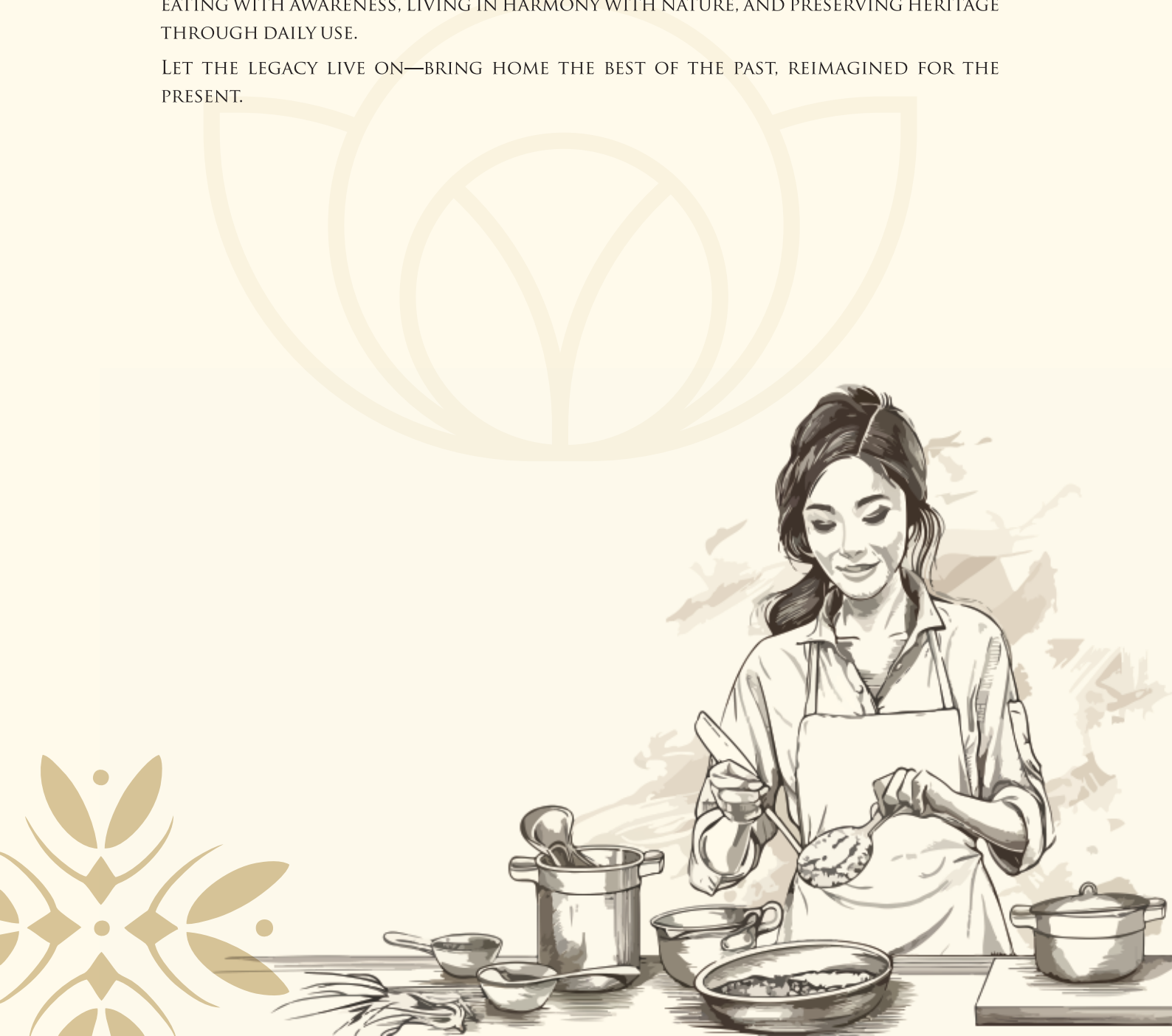
HANDCRAFTED BY SKILLED ARTISANS USING TRADITIONAL TECHNIQUES

THEY FIT INTO CONTEMPORARY KITCHENS WHILE CARRYING THE SOUL OF ANCIENT CRAFTSMANSHIP.

## MAKE THE SHIFT

CHOOSING BRONZE ISN'T JUST A STYLE STATEMENT—IT'S A LIFESTYLE CHOICE. IT'S ABOUT EATING WITH AWARENESS, LIVING IN HARMONY WITH NATURE, AND PRESERVING HERITAGE THROUGH DAILY USE.

LET THE LEGACY LIVE ON—BRING HOME THE BEST OF THE PAST, REIMAGINED FOR THE PRESENT.



## WHY KANSYAM BRONZE?



Keeps your health safe



100% ability to kill bacteria



It achieves the oligodynamic effect



Helps in curing skin problems,  
weak digestion, insomnia etc.



Lead (Pb) free products



Purity certified by reputed labs of country



Faster delivery for any number  
of qualities



A rich, healthy and royal  
giftable products



Brand you can trust



Our Bronze is compatible with  
all kinds of food



5 years warranty



Dishwasher Friendly



NABL RoHS certified



22% tin



Better resale value



Our Bronze kitchenware can be directly put on the flame



# Glass



| PRODUCT  | BENGAL        |
|----------|---------------|
| CODE     | GLSR0001      |
| Capacity | 250ml.        |
| Height   | 3.15"         |
| Weight   | 180gm         |
| Dia      | 3.00"         |
| Pack     | 6             |
| GTIN     | 8906180021021 |



| PRODUCT  | CHANDI        |
|----------|---------------|
| CODE     | GLSR0002      |
| Capacity | 250ml.        |
| Height   | 3.25"         |
| Weight   | 180gm         |
| Dia      | 3.00"         |
| Pack     | 6             |
| GTIN     | 8906180021038 |



| PRODUCT  | KOTHI         |
|----------|---------------|
| CODE     | GLSR0003      |
| Capacity | 250ml.        |
| Height   | 2.75"         |
| Weight   | 180gm         |
| Dia      | 3.00"         |
| Pack     | 6             |
| GTIN     | 8906180021045 |

# Glass



| PRODUCT  | PIPE          |
|----------|---------------|
| CODE     | GLSR0004      |
| Capacity | 250ml.        |
| Height   | 3.25"         |
| Weight   | 180gm         |
| Dia      | 2.75"         |
| Pack     | 6             |
| GTIN     | 8906180021052 |



| PRODUCT  | BOMBAY        |
|----------|---------------|
| CODE     | GLSR0005      |
| Capacity | 280ml.        |
| Height   | 3.75"         |
| Weight   | 220gm         |
| Dia      | 3.00"         |
| Pack     | 6             |
| GTIN     | 8906180021069 |



| PRODUCT  | LOTI          |
|----------|---------------|
| CODE     | GLSR0006      |
| Capacity | 275ml.        |
| Height   | 3.00"         |
| Weight   | 250gm         |
| Dia      | 3.00"         |
| Pack     | 6             |
| GTIN     | 8906180021076 |



| PRODUCT  | DAMRU         |
|----------|---------------|
| CODE     | GLSR0007      |
| Capacity | 275ml.        |
| Height   | 3.75"         |
| Weight   | 270gm         |
| Dia      | 2.50"         |
| Pack     | 6             |
| GTIN     | 8906180021083 |



| PRODUCT  | PENDI         |
|----------|---------------|
| CODE     | GLSR0008      |
| Capacity | 245ml.        |
| Height   | 3.25"         |
| Weight   | 250gm         |
| Dia      | 3.00"         |
| Pack     | 6             |
| GTIN     | 8906180021090 |



| PRODUCT  | LOTI SMALL    |
|----------|---------------|
| CODE     | GLSR0009      |
| Capacity | 150ml.        |
| Height   | 2.50"         |
| Weight   | 200gm         |
| Dia      | 2.50"         |
| Pack     | 6             |
| GTIN     | 8906180021106 |



| PRODUCT  | KOTHI JUICE   |
|----------|---------------|
| CODE     | GLSR0010      |
| Capacity | 150ml.        |
| Height   | 2.75"         |
| Weight   | 150gm         |
| Dia      | 2.25"         |
| Pack     | 6             |
| GTIN     | 8906180021113 |



| PRODUCT  | PIPE JUICE    |
|----------|---------------|
| CODE     | GLSR0011      |
| Capacity | 150ml.        |
| Height   | 2.75"         |
| Weight   | 150gm         |
| Dia      | 2.25"         |
| Pack     | 6             |
| GTIN     | 8906180021120 |



| PRODUCT  | FLOWER        |
|----------|---------------|
| CODE     | GLSR0012      |
| Capacity | 300ml.        |
| Height   | 3.25"         |
| Weight   | 260gm         |
| Dia      | 3.50"         |
| Pack     | 6             |
| GTIN     | 8906180021137 |



# Glass



| PRODUCT  | LASSI         |
|----------|---------------|
| CODE     | GLSR0013      |
| Capacity | 450ml.        |
| Height   | 5.20"         |
| Weight   | 440gm         |
| Dia      | 3.25"         |
| Pack     | 6             |
| GTIN     | 8906180021144 |



| PRODUCT  | VASTU         |
|----------|---------------|
| CODE     | GLSR0014      |
| Capacity | 1300ml.       |
| Height   | 9.30"         |
| Weight   | 1290gm        |
| Dia      | 4.25"         |
| Pack     | 6             |
| GTIN     | 8906180021151 |



| PRODUCT  | HOTEL         |
|----------|---------------|
| CODE     | GLSR0019      |
| Capacity | 350ml.        |
| Height   | 3.75"         |
| Weight   | 300gm         |
| Dia      | 3.40"         |
| Pack     | 6             |
| GTIN     | 8906180021168 |



| PRODUCT  | COCKTAIL      |
|----------|---------------|
| CODE     | GLSR0016      |
| Capacity | 150ml.        |
| Height   | 4.00"         |
| Weight   | 250gm         |
| Dia      | 2.50"         |
| Pack     | 6             |
| GTIN     | 8906180021175 |



| PRODUCT  | PANCH PATRA   |
|----------|---------------|
| CODE     | GLSR0017      |
| Capacity | 150ml.        |
| Height   | 2.50"         |
| Weight   | 160gm         |
| Dia      | 2.90"         |
| Pack     | 6             |
| GTIN     | 8906180021182 |



| PRODUCT  | COFFEE MUG    |
|----------|---------------|
| CODE     | GLSR0018      |
| Capacity | 200ml.        |
| Height   | 2.75"         |
| Weight   | 120gm         |
| Dia      | 2.50"         |
| Pack     | 6             |
| GTIN     | 8906180021199 |



| PRODUCT  | HOTEL SMALL   |
|----------|---------------|
| CODE     | GLSR0019      |
| Capacity | 250ml.        |
| Height   | 2.75"         |
| Weight   | 270gm         |
| Dia      | 3.40"         |
| Pack     | 6             |
| GTIN     | 8906180021205 |



| PRODUCT  | VEDA GLASS    |
|----------|---------------|
| CODE     | GLSR0020      |
| Capacity | 280ml.        |
| Height   | 3.50"         |
| Weight   | 180gm         |
| Dia      | 3.00"         |
| Pack     | 6             |
| GTIN     | 8906180021212 |



| PRODUCT      | TEA GLASS     |
|--------------|---------------|
| CODE         | GLSR0021      |
| Capacity     | 100ml.        |
| Height       | 2.25"         |
| Weight       | 120gm         |
| Dia          | 2.40"         |
| Pack         | 6             |
| MRP ₹ (p.pc) |               |
| GTIN         | 8906180021229 |



# Glass



| PRODUCT  | STAND GLASS   |
|----------|---------------|
| CODE     | GLSR0022      |
| Capacity | 270ml.        |
| Height   | 3.50"         |
| Weight   | 300gm         |
| Dia      | 3.25"         |
| Pack     | 6             |
| GTIN     | 8906180021236 |



| PRODUCT  | SLIM KOTHI    |
|----------|---------------|
| CODE     | GLSR0023      |
| Capacity | 250ml.        |
| Height   | 3.40"         |
| Weight   | 180gm         |
| Dia      | 2.60"         |
| Pack     | 6             |
| GTIN     | 8906180021243 |



| PRODUCT  | BLACK PATTI   |
|----------|---------------|
| CODE     | GLSR0024      |
| Capacity | 270ml.        |
| Height   | 3.55"         |
| Weight   | 250gm         |
| Dia      | 2.60"         |
| Pack     | 6             |
| GTIN     | 8906180021250 |



| PRODUCT  | BUTTER MILK   |
|----------|---------------|
| CODE     | GLSR0025      |
| Capacity | 270ml.        |
| Height   | 3.75"         |
| Weight   | 230gm         |
| Dia      | 3.00"         |
| Pack     | 6             |
| GTIN     | 8906180021267 |



| PRODUCT  | BELLY LOTI    |
|----------|---------------|
| CODE     | GLSR0026      |
| Capacity | 300ml.        |
| Height   | 3.50"         |
| Weight   | 240gm         |
| Dia      | 2.75"         |
| Pack     | 6             |
| GTIN     | 8906180021274 |



| PRODUCT  | BELLY LOTI S  |
|----------|---------------|
| CODE     | GLSR0027      |
| Capacity | 180ml.        |
| Height   | 2.40"         |
| Weight   | 180gm         |
| Dia      | 2.50"         |
| Pack     | 6             |
| GTIN     | 8906180021281 |

# Glass



| PRODUCT  | KOTHI SMALL   |
|----------|---------------|
| CODE     | GLSR0028      |
| Capacity | 100ml.        |
| Height   | 2.10"         |
| Weight   | 120gm         |
| Dia      | 2.25"         |
| Pack     | 6             |
| GTIN     | 8906180021298 |



| PRODUCT  | CHAMPAGNE     |
|----------|---------------|
| CODE     | GLSR0029      |
| Capacity | 200ml.        |
| Height   | 9.00"         |
| Weight   | 450gm         |
| Dia      | 2.00"         |
| Pack     | 6             |
| GTIN     | 8906180021304 |



| PRODUCT  | MARTINI       |
|----------|---------------|
| CODE     | GLSR0030      |
| Capacity | 150ml.        |
| Height   | 6.50"         |
| Weight   | 400gm         |
| Dia      | 3.80"         |
| Pack     | 2             |
| GTIN     | 8906180021311 |



| PRODUCT  | AAMPRAPALI    |
|----------|---------------|
| CODE     | GLSR0031      |
| Capacity | 270ml.        |
| Height   | 3.75"         |
| Weight   | 220gm         |
| Dia      | 2.60"         |
| Pack     | 6             |
| GTIN     | 8906180021328 |



| PRODUCT  | FILTER COFFEE SET |
|----------|-------------------|
| CODE     | GLSR0032          |
| Capacity | 130ml.+160ml.     |
| Height   | 2.75"+1.50"       |
| Weight   | 250gm+100gm       |
| Dia      | 4.00"+3.00"       |
| Pack     | 2                 |
| GTIN     | 8906180021335     |



| PRODUCT  | MULE MUG      |
|----------|---------------|
| CODE     | GLSR0033      |
| Capacity | 450ml.        |
| Height   | 3.65"         |
| Weight   | 400gm         |
| Dia      | 3.10"         |
| Pack     | 2             |
| GTIN     | 8906180021342 |



| PRODUCT  | DAMRU SMALL   |
|----------|---------------|
| CODE     | GLSR0034      |
| Capacity | 200ml.        |
| Height   | 2.75"         |
| Weight   | 180gm         |
| Dia      | 2.25"         |
| Pack     | 6             |
| GTIN     | 8906180021359 |

# Bowl



| PRODUCT  | BOWL No. 0    |
|----------|---------------|
| CODE     | BWLR0290      |
| Capacity | 80ml.         |
| Height   | 1.10"         |
| Weight   | 90gm          |
| Dia      | 2.90"         |
| Pack     | 6             |
| GTIN     | 8906180021366 |



| PRODUCT  | BOWL No. 1    |
|----------|---------------|
| CODE     | BWLR0310      |
| Capacity | 100ml.        |
| Height   | 1.15"         |
| Weight   | 110gm         |
| Dia      | 3.10"         |
| Pack     | 6             |
| GTIN     | 8906180021373 |



| PRODUCT  | BOWL No. 2    |
|----------|---------------|
| CODE     | BWLR0330      |
| Capacity | 130ml.        |
| Height   | 1.25"         |
| Weight   | 120gm         |
| Dia      | 3.30"         |
| Pack     | 6             |
| GTIN     | 8906180021380 |



# Bowl



| PRODUCT  | BOWL No.3     |
|----------|---------------|
| CODE     | BWLR0375      |
| Capacity | 150ml.        |
| Height   | 3.75"         |
| Weight   | 130gm         |
| Dia      | 3.40"         |
| Pack     | 6             |
| GTIN     | 8906180021397 |



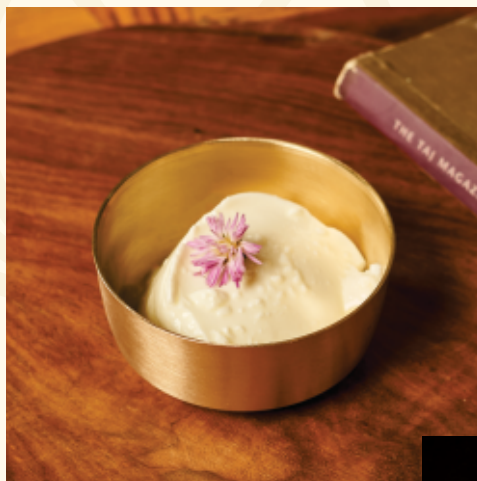
| PRODUCT  | BOWL No.4     |
|----------|---------------|
| CODE     | BWLR0460      |
| Capacity | 230ml.        |
| Height   | 1.50"         |
| Weight   | 150gm         |
| Dia      | 4.60"         |
| Pack     | 6             |
| GTIN     | 8906180021403 |



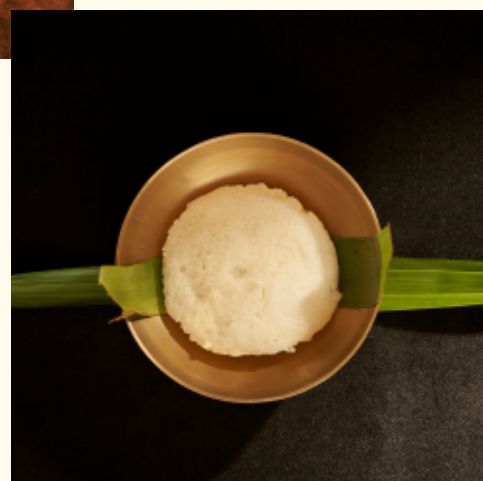
| PRODUCT  | MANGO         |
|----------|---------------|
| CODE     | BWLM0340      |
| Capacity | 150ml.        |
| Height   | 1.40"         |
| Weight   | 150gm         |
| Dia      | 3.40"         |
| Pack     | 6             |
| GTIN     | 8906180021410 |



| PRODUCT  | CURVE         |
|----------|---------------|
| CODE     | BWLC0325      |
| Capacity | 150ml.        |
| Height   | 1.40"         |
| Weight   | 150gm         |
| Dia      | 3.25"         |
| Pack     | 6             |
| GTIN     | 8906180021427 |



| PRODUCT  | CURVE S       |
|----------|---------------|
| CODE     | BWLC0225      |
| Capacity | 80ml.         |
| Height   | 1.15"         |
| Weight   | 115gm         |
| Dia      | 2.25"         |
| Pack     | 6             |
| GTIN     | 8906180021434 |



# Horeca



| PRODUCT  | BOWL - HORECA 1 |
|----------|-----------------|
| CODE     | BWLH0390        |
| Capacity | 80ml.           |
| Height   | 1.25"           |
| Weight   | 120gm           |
| Dia      | 2.90"           |
| Pack     | 6               |
| GTIN     | 8906180021441   |



| PRODUCT  | BOWL - HORECA 2 |
|----------|-----------------|
| CODE     | BWLH0340        |
| Capacity | 130ml.          |
| Height   | 1.40"           |
| Weight   | 140gm           |
| Dia      | 3.40"           |
| Pack     | 6               |
| GTIN     | 8906180021458   |



| PRODUCT  | BOWL - HORECA 3 |
|----------|-----------------|
| CODE     | BWLH0390        |
| Capacity | 170ml.          |
| Height   | 1.60"           |
| Weight   | 160gm           |
| Dia      | 3.90"           |
| Pack     | 6               |
| GTIN     | 8906180021465   |



| PRODUCT  | BOWL - HORECA 4 |
|----------|-----------------|
| CODE     | BWLH0400        |
| Capacity | 230ml.          |
| Height   | 1.75"           |
| Weight   | 175gm           |
| Dia      | 4.00"           |
| Pack     | 6               |
| GTIN     | 8906180021472   |



| PRODUCT  | I/C BOWL S    |
|----------|---------------|
| CODE     | BWLI0340      |
| Capacity | 100ml.        |
| Height   | 1.75"         |
| Weight   | 180gm         |
| Dia      | 3.40"         |
| Pack     | 6             |
| GTIN     | 8906180021489 |



| PRODUCT  | I/C BOWL L    |
|----------|---------------|
| CODE     | BWLI0375      |
| Capacity | 150ml.        |
| Height   | 2.25"         |
| Weight   | 230gm         |
| Dia      | 3.75"         |
| Pack     | 6             |
| GTIN     | 8906180021496 |



# Soup Bowl



| PRODUCT  | SOUP (SMALL)  |
|----------|---------------|
| CODE     | BWLSSM0490    |
| Capacity | 270ml.        |
| Height   | 1.40"         |
| Weight   | 190gm         |
| Dia      | 4.90"         |
| Pack     | 6             |
| GTIN     | 8906180021502 |



| PRODUCT  | SOUP (LARGE)  |
|----------|---------------|
| CODE     | BWLSLA0525    |
| Capacity | 350ml.        |
| Height   | 1.75"         |
| Weight   | 250gm         |
| Dia      | 5.25"         |
| Pack     | 6             |
| GTIN     | 8906180021519 |



| PRODUCT  | SOUP (CARVING) |
|----------|----------------|
| CODE     | BWLSCA0525     |
| Capacity | 350ml.         |
| Height   | 1.75"          |
| Weight   | 260gm          |
| Dia      | 5.25"          |
| Pack     | 6              |
| GTIN     | 8906180021526  |



| PRODUCT  | SOUP (E.Large) |
|----------|----------------|
| CODE     | BWLSEL0575     |
| Capacity | 600ml.         |
| Height   | 2.10"          |
| Weight   | 450gm          |
| Dia      | 5.75"          |
| Pack     | 6              |
| GTIN     | 8906180021533  |



| PRODUCT  | SOUP (Double E.Large) |
|----------|-----------------------|
| CODE     | BWLSDL0270            |
| Capacity | 1050ml.               |
| Height   | 2.75"                 |
| Weight   | 700gm                 |
| Dia      | 7.00"                 |
| Pack     | 6                     |
| GTIN     | 8906180021540         |



| PRODUCT  | SOUP (CURVE)  |
|----------|---------------|
| CODE     | BWLSCU0525    |
| Capacity | 350ml.        |
| Height   | 1.40"         |
| Weight   | 450gm         |
| Dia      | 5.25"         |
| Pack     | 6             |
| GTIN     | 8906180021557 |



# Wati



| PRODUCT  | BOWL LOTUS    |
|----------|---------------|
| CODE     | BWLL0325      |
| Capacity | 170ml.        |
| Height   | 1.50"         |
| Weight   | 160gm         |
| Dia      | 3.25"         |
| Pack     | 6             |
| GTIN     | 8906180021564 |



| PRODUCT  | WATI 0        |
|----------|---------------|
| CODE     | WATR0240      |
| Capacity | 80ml.         |
| Height   | 1.25"         |
| Weight   | 90gm          |
| Dia      | 2.40"         |
| Pack     | 6             |
| GTIN     | 8906180021571 |



| PRODUCT  | WATI 01       |
|----------|---------------|
| CODE     | WATR0300      |
| Capacity | 100ml.        |
| Height   | 1.25"         |
| Weight   | 110gm         |
| Dia      | 3.00"         |
| Pack     | 6             |
| GTIN     | 8906180021588 |



| PRODUCT  | WATI 02       |
|----------|---------------|
| CODE     | WATR0310      |
| Capacity | 130ml.        |
| Height   | 1.25"         |
| Weight   | 120gm         |
| Dia      | 3.10"         |
| Pack     | 6             |
| GTIN     | 8906180021595 |



| PRODUCT  | WATI 03       |
|----------|---------------|
| CODE     | WATR0340      |
| Capacity | 160ml.        |
| Height   | 1.50"         |
| Weight   | 130gm         |
| Dia      | 3.40"         |
| Pack     | 6             |
| GTIN     | 8906180021601 |



| PRODUCT  | WATI 04       |
|----------|---------------|
| CODE     | WATR0360      |
| Capacity | 200ml.        |
| Height   | 1.60"         |
| Weight   | 150gm         |
| Dia      | 3.60"         |
| Pack     | 6             |
| GTIN     | 8906180021618 |



# Wati



| PRODUCT  | CHATNI (Small) |
|----------|----------------|
| CODE     | WATC0200       |
| Capacity | 40ml.          |
| Height   | 1.60"          |
| Weight   | 40gm           |
| Dia      | 1.10"          |
| Pack     | 6              |
| GTIN     | 8906180021625  |



| PRODUCT  | CHATNI (Large) |
|----------|----------------|
| CODE     | WATC0250       |
| Capacity | 50ml.          |
| Height   | 1.10"          |
| Weight   | 80gm           |
| Dia      | 2.50"          |
| Pack     | 6              |
| GTIN     | 8906180021632  |



| PRODUCT  | WATI SQUARE   |
|----------|---------------|
| CODE     | WATS0300      |
| Capacity | 320ml.        |
| Height   | 1.25"         |
| Weight   | 120gm         |
| Dia      | 3.00"         |
| Pack     | 6             |
| GTIN     | 8906180021649 |



| PRODUCT  | WATI HANDLE   |
|----------|---------------|
| CODE     | WATH0300      |
| Capacity | 100ml.        |
| Height   | 1.40"         |
| Weight   | 180gm         |
| Dia      | 3.00"         |
| Pack     | 6             |
| GTIN     | 8906180021656 |







# Sweet Plate



| PRODUCT  | LOTUS         |
|----------|---------------|
| CODE     | HPLL0375      |
| Capacity | 180ml.        |
| Height   | 1.50"         |
| Weight   | 190gm         |
| Dia      | 1.25"         |
| Pack     | 6             |
| GTIN     | 8906180021663 |



| PRODUCT  | HALVA PLATE 1 |
|----------|---------------|
| CODE     | HPLR0390      |
| Capacity | 150ml.        |
| Height   | 0.60"         |
| Weight   | 100gm         |
| Dia      | 1.60"         |
| Pack     | 6             |
| GTIN     | 8906180021670 |



| PRODUCT  | HALVA PLATE 2 |
|----------|---------------|
| CODE     | HPLR0425      |
| Capacity | 150ml.        |
| Height   | 0.75"         |
| Weight   | 120gm         |
| Dia      | 4.25"         |
| Pack     | 6             |
| GTIN     | 8906180021687 |

# Sweet Plate



| PRODUCT  | HALVA PLATE 3 |
|----------|---------------|
| CODE     | HPLR0525      |
| Capacity | 200ml.        |
| Height   | 0.75"         |
| Weight   | 150gm         |
| Dia      | 5.25"         |
| Pack     | 6             |
| GTIN     | 8906180021694 |



| PRODUCT  | HALVA CURVE   |
|----------|---------------|
| CODE     | HPLC0425      |
| Capacity | 250ml.        |
| Height   | 1.40"         |
| Weight   | 260gm         |
| Dia      | 4.25"         |
| Pack     | 6             |
| GTIN     | 8906180021700 |



| PRODUCT  | HALVA DEEP 01 |
|----------|---------------|
| CODE     | HPLD0325      |
| Capacity | 50ml.         |
| Height   | 0.60"         |
| Weight   | 100gm         |
| Dia      | 3.25"         |
| Pack     | 6             |
| GTIN     | 8906180021717 |



| PRODUCT  | HALVA DEEP 02 |
|----------|---------------|
| CODE     | HPLD0425      |
| Capacity | 150ml.        |
| Height   | 1.00"         |
| Weight   | 135gm         |
| Dia      | 4.25"         |
| Pack     | 6             |
| GTIN     | 8906180021724 |



| PRODUCT  | HALVA DEEP 03 |
|----------|---------------|
| CODE     | HPLD0540      |
| Capacity | 300ml.        |
| Height   | 1.25"         |
| Weight   | 200gm         |
| Dia      | 5.40"         |
| Pack     | 6             |
| GTIN     | 8906180021731 |



# Thardi



| PRODUCT  | THARDI 0      |
|----------|---------------|
| CODE     | THDR0400      |
| Capacity | 150ml.        |
| Height   | 1.25"         |
| Weight   | 140gm         |
| Dia      | 4.00"         |
| Pack     | 6             |
| GTIN     | 8906180021748 |



| PRODUCT  | THARDI 01     |
|----------|---------------|
| CODE     | THDR0425      |
| Capacity | 240ml.        |
| Height   | 1.40"         |
| Weight   | 165gm         |
| Dia      | 4.25"         |
| Pack     | 6             |
| GTIN     | 8906180021755 |



| PRODUCT  | THARDI 02     |
|----------|---------------|
| CODE     | THDR0475      |
| Capacity | 300ml.        |
| Height   | 1.50"         |
| Weight   | 200gm         |
| Dia      | 4.75"         |
| Pack     | 6             |
| GTIN     | 8906180021762 |



| PRODUCT  | THARDI 2.5    |
|----------|---------------|
| CODE     | THDR0500      |
| Capacity | 320ml.        |
| Height   | 1.50"         |
| Weight   | 225gm         |
| Dia      | 5.00"         |
| Pack     | 6             |
| GTIN     | 8906180021779 |



| PRODUCT  | THARDI 3      |
|----------|---------------|
| CODE     | THDR0600      |
| Capacity | 500ml.        |
| Height   | 1.75"         |
| Weight   | 325gm         |
| Dia      | 6.00"         |
| Pack     | 6             |
| GTIN     | 8906180021786 |



| PRODUCT  | THARDI 4      |
|----------|---------------|
| CODE     | THDR0650      |
| Capacity | 750ml.        |
| Height   | 2.00"         |
| Weight   | 450gm         |
| Dia      | 6.50"         |
| Pack     | 6             |
| GTIN     | 8906180021793 |



| PRODUCT  | THARDI 5      |
|----------|---------------|
| CODE     | THDR0775      |
| Capacity | 1200ml.       |
| Height   | 2.25"         |
| Weight   | 700gm         |
| Dia      | 7.75"         |
| Pack     | 6             |
| GTIN     | 8906180021809 |



| PRODUCT  | THARDI KUTCHI S |
|----------|-----------------|
| CODE     | THDK0600        |
| Capacity | 320ml.          |
| Height   | 1.10"           |
| Weight   | 290gm           |
| Dia      | 6.00"           |
| Pack     | 6               |
| GTIN     | 8906180021816   |



| PRODUCT  | THARDI KUTCHI L |
|----------|-----------------|
| CODE     | THDK0650        |
| Capacity | 500ml.          |
| Height   | 1.25"           |
| Weight   | 370gm           |
| Dia      | 6.50"           |
| Pack     | 6               |
| GTIN     | 8906180021823   |





# Tasla



| PRODUCT  | TASLA NO.1    |
|----------|---------------|
| CODE     | TASR0550      |
| Capacity | 300ml.        |
| Height   | 1.50"         |
| Weight   | 250gm         |
| Dia      | 5.50"         |
| Pack     | 6             |
| GTIN     | 8906180021830 |



| PRODUCT  | TASLA NO.2    |
|----------|---------------|
| CODE     | TASR0600      |
| Capacity | 400ml.        |
| Height   | 1.75"         |
| Weight   | 350gm         |
| Dia      | 6.00"         |
| Pack     | 6             |
| GTIN     | 8906180021847 |



| PRODUCT  | TASLA NO.3    |
|----------|---------------|
| CODE     | TASR0725      |
| Capacity | 700ml.        |
| Height   | 1.90"         |
| Weight   | 500gm         |
| Dia      | 7.25"         |
| Pack     | 6             |
| GTIN     | 8906180021854 |



| PRODUCT  | TASLA NO.4    |
|----------|---------------|
| CODE     | TASR0875      |
| Capacity | 1000ml.       |
| Height   | 2.25"         |
| Weight   | 770gm         |
| Dia      | 8.75"         |
| Pack     | 6             |
| GTIN     | 8906180021861 |





# Chaliya



| PRODUCT  | CHALIYA (small) |
|----------|-----------------|
| CODE     | CHLR0375        |
| Capacity | 110ml.          |
| Height   | 1.25"           |
| Weight   | 150gm           |
| Dia      | 3.75"           |
| Pack     | 6               |
| GTIN     | 8906180021885   |



| PRODUCT  | CHALIYA (Medium) |
|----------|------------------|
| CODE     | CHLR0400         |
| Capacity | 180ml.           |
| Height   | 1.50"            |
| Weight   | 200gm            |
| Dia      | 4.00"            |
| Pack     | 6                |
| GTIN     | 8906180021892    |



| PRODUCT  | CHALIYA (Large) |
|----------|-----------------|
| CODE     | CHLR0405        |
| Capacity | 250ml.          |
| Height   | 1.40"           |
| Weight   | 300gm           |
| Dia      | 4.05"           |
| Pack     | 6               |
| GTIN     | 8906180021908   |





# Thali

| ITEM CODE | PRODUCT         | DIA    | WEIGHT | HEIGHT | PACK  | GTIN          |
|-----------|-----------------|--------|--------|--------|-------|---------------|
| THLR0550  | BRONZE THALI 07 | 5.50"  | 220gm  | 1.00"  | 4 pcs | 8906180021915 |
| THLR0625  | BRONZE THALI 08 | 6.25"  | 250gm  | 1.00"  | 4 pcs | 8906180021922 |
| THLR0700  | BRONZE THALI 09 | 7.50"  | 330gm  | 1.00"  | 4 pcs | 8906180021939 |
| THLR0750  | BRONZE THALI 10 | 7.00"  | 360gm  | 1.10"  | 4 pcs | 8906180021946 |
| THLR0825  | BRONZE THALI 11 | 8.25"  | 490gm  | 1.25"  | 3 pcs | 8906180021953 |
| THLR0940  | BRONZE THALI 12 | 9.40"  | 590gm  | 1.50"  | 3 pcs | 8906180021960 |
| THLR1025  | BRONZE THALI 13 | 10.25" | 670gm  | 1.40"  | 3 pcs | 8906180021977 |
| THLR1125  | BRONZE THALI 14 | 11.25" | 750gm  | 1.25"  | 3 pcs | 8906180021984 |
| THLW1125  | BRONZE THLW 14  | 11.25" | 720gm  | 1.25"  | 3 pcs | 8906180021991 |
| THLR1210  | BRONZE THALI 15 | 12.10" | 950gm  | 1.40"  | 2 pcs | 8906180022004 |
| THLR1275  | BRONZE THALI 16 | 12.75" | 1200gm | 1.50"  | 2 pcs | 8906180022011 |
| THLR1450  | BRONZE THALI 18 | 14.50" | 1500gm | 1.50"  | 2 pcs | 8906180022028 |
| THLR1700  | BRONZE THALI 20 | 17.00" | 2500gm | 1.70"  | 2 pcs | 8906180022035 |

# Thali



| PRODUCT  | THALI URLI    |
|----------|---------------|
| CODE     | URLI1025      |
| Capacity | -             |
| Height   | 1.90"         |
| Weight   | 850gm         |
| Dia      | 10.25"        |
| Pack     | 2             |
| GTIN     | 8906180022042 |



| PRODUCT  | CURVE         |
|----------|---------------|
| CODE     | THLC1200      |
| Capacity | -             |
| Height   | 1.25"         |
| Weight   | 950gm         |
| Dia      | 12.00"        |
| Pack     | 2             |
| GTIN     | 8906180022066 |



| PRODUCT  | CURVE MEDIUM  |
|----------|---------------|
| CODE     | THLC1050      |
| Capacity | -             |
| Height   | 1.75"         |
| Weight   | 900gm         |
| Dia      | 10.50"        |
| Pack     | 2             |
| GTIN     | 8906180022073 |



| PRODUCT  | CURVE SMALL   |
|----------|---------------|
| CODE     | THLC0950      |
| Capacity | -             |
| Height   | 1.50"         |
| Weight   | 700gm         |
| Dia      | 9.50"         |
| Pack     | 2             |
| GTIN     | 8906180022059 |



| PRODUCT  | CURVE QUARTER |
|----------|---------------|
| CODE     | THLC0725      |
| Capacity | -             |
| Height   | 1.40"         |
| Weight   | gm            |
| Dia      | 7.25"         |
| Pack     | -             |
| GTIN     | 8906180022080 |



# Thali



Traditional Set in 2 Parts

| PRODUCT | THALI MANGO   | Mango (Part A) | Mango (Part B) |
|---------|---------------|----------------|----------------|
| CODE    | THLM2500      | -              | -              |
| Length  | -             | 14.50"         | 16.50"         |
| Breadth | -             | 7.50"          | 7.75"          |
| Height  | -             | 0.6"           | 0.6"           |
| Weight  | 2500gm        | 1300gm         | 1200gm         |
| Pack    | 1             |                |                |
| GTIN    | 8906180022097 |                |                |



| PRODUCT  | THALI PATI    |
|----------|---------------|
| CODE     | THLP1140      |
| Capacity | -             |
| Height   | 1.10"         |
| Weight   | 800gm         |
| Dia      | 11.40"        |
| Pack     | 3             |
| GTIN     | 8906180022103 |

| PRODUCT  | PATTI NO.18   |
|----------|---------------|
| CODE     | THLP1500      |
| Capacity | -             |
| Height   | 1.25"         |
| Weight   | 800gm         |
| Dia      | 15.00"        |
| Pack     | 2             |
| GTIN     | 8906180022110 |





# Plate



| ITEM CODE | PRODUCT         | DIA    | WEIGHT | HEIGHT | PACK  | GTIN          |
|-----------|-----------------|--------|--------|--------|-------|---------------|
| PLTR0625  | BRONZE PLATE 08 | 6.25"  | 250gm  | 0.90"  | 3 pcs | 8906180022127 |
| PLTR0750  | BRONZE PLATE 09 | 7.50"  | 370gm  | 0.75"  | 3 pcs | 8906180022134 |
| PLTR0850  | BRONZE PLATE 10 | 8.50"  | 425gm  | 1".00  | 3 pcs | 8906180022141 |
| PLTR0975  | BRONZE PLATE 11 | 9.75"  | 500gm  | 0.75"  | 3 pcs | 8906180022158 |
| PLTR1025  | BRONZE PLATE 12 | 10.25" | 600gm  | 0.75"  | 3 pcs | 8906180022165 |
| PLTR1140  | BRONZE PLATE 13 | 11.40" | 700gm  | 0.75"  | 3 pcs | 8906180022172 |
| PLTR1210  | BRONZE PLATE 14 | 12.10" | 800gm  | 0.75"  | 3 pcs | 8906180022189 |
| PLTR1300  | BRONZE PLATE 15 | 13.00" | 950gm  | 0.75"  | 3 pcs | 8906180022196 |
| PLTR1475  | BRONZE PLATE 18 | 14.75" | 1550gm | 0.90"  | 3 pcs | 8906180022202 |

# Plate



| PRODUCT  | PLATE SQUARE  |
|----------|---------------|
| CODE     | PLTS1100      |
| Capacity | -             |
| Height   | 0.50"         |
| Weight   | 2200gm        |
| Dia      | 11.00"        |
| Pack     | 2             |
| GTIN     | 8906180022219 |



| PRODUCT  | SQUARE SMALL  |
|----------|---------------|
| CODE     | PLTSS0700     |
| Capacity | -             |
| Height   | 0.60"         |
| Weight   | 620gm         |
| Dia      | 7"            |
| Pack     | 2             |
| GTIN     | 8906180022226 |



| PRODUCT  | OVAL LARGE    |
|----------|---------------|
| CODE     | PLTO1775      |
| Capacity | -             |
| Height   | 0.75"         |
| Weight   | 1800gm        |
| Dia      | 17.75"        |
| Pack     | 2             |
| GTIN     | 8906180022233 |



| PRODUCT  | TARBHANA Pooja Thali |
|----------|----------------------|
| CODE     | PLTT0800             |
| Capacity | -                    |
| Height   | 1.10"                |
| Weight   | 460gm                |
| Dia      | 8.00"                |
| Pack     | 3                    |
| GTIN     | 8906180022240        |



| PRODUCT  | STARTER MANGO  |
|----------|----------------|
| CODE     | PLTMP1050      |
| Capacity | -              |
| Height   | 0.50"          |
| Weight   | 780gm          |
| Dia      | 10.50" - 5.25" |
| Pack     | 2              |
| GTIN     | 8906180022257  |



| PRODUCT  | PLATE PATI    |
|----------|---------------|
| CODE     | PLTP0960      |
| Capacity | -             |
| Height   | 1.90"         |
| Weight   | 550gm         |
| Dia      | 9.60"         |
| Pack     | 3             |
| GTIN     | 8906180022264 |



# Plate



| PRODUCT  | PLATE OVAL    |
|----------|---------------|
| CODE     | PLTO0750      |
| Capacity | -             |
| Height   | 0.50"         |
| Weight   | 380gm         |
| Dia      | 7.50" + 5.25" |
| Pack     | 3             |
| GTIN     | 8906180022271 |



| PRODUCT  | DEEP RICE     |
|----------|---------------|
| CODE     | PLTR1000      |
| Capacity | -             |
| Height   | 0.90"         |
| Weight   | 710gm         |
| Dia      | 10.00"        |
| Pack     | 3             |
| GTIN     | 8906180022288 |



| PRODUCT  | PLATE FRUIT   |
|----------|---------------|
| CODE     | PLTF0975      |
| Capacity | -             |
| Height   | 1.25"         |
| Weight   | 370gm         |
| Dia      | 9.75"         |
| Pack     | 3             |
| GTIN     | 8906180022295 |



| PRODUCT  | PLATE MUKHWAS |
|----------|---------------|
| CODE     | PLTF0975      |
| Capacity | -             |
| Height   | 1.10"         |
| Weight   | 880gm         |
| Dia      | 11.75"        |
| Pack     | 3             |
| GTIN     | 8906180022301 |



# Plate



| PRODUCT  | PLATE BADAM   |
|----------|---------------|
| CODE     | PLTB0750      |
| Capacity | -             |
| Height   | 0.60"         |
| Weight   | 850gm         |
| Dia      | 7.50"         |
| Pack     | 3             |
| GTIN     | 8906180022318 |

| PRODUCT  | SQUARE SERVE  |
|----------|---------------|
| CODE     | PLTSS0750     |
| Capacity | -             |
| Height   | 0.75"         |
| Weight   | 880gm         |
| Dia      | 7.50"         |
| Pack     | 3             |
| GTIN     | 8906180022325 |



| ITEM CODE | PRODUCT               | DIA    | WEIGHT | HEIGHT | PACK  | GTIN          |
|-----------|-----------------------|--------|--------|--------|-------|---------------|
| PLTB0725  | BRONZE PLATE - BUFFET | 7.25"  | 350gm  | 0.40"  | 3 pcs | 8906180022332 |
| PLTB0825  | BRONZE PLATE - BUFFET | 8.25"  | 480gm  | 0.40"  | 3 pcs | 8906180022349 |
| PLTB1010  | BRONZE PLATE - BUFFET | 10.10" | 800gm  | 0.50"  | 3 pcs | 8906180022356 |
| PLTB1150  | BRONZE PLATE - BUFFET | 11.50" | 950gm  | 0.60"  | 3 pcs | 8906180022363 |





# Spoon



| PRODUCT | SPOON REG     |
|---------|---------------|
| CODE    | SPNR0001      |
| Length  | 15cm          |
| Weight  | 60gm          |
| Pack    | 6             |
| GTIN    | 8906180022370 |



| PRODUCT | BABY REG      |
|---------|---------------|
| CODE    | SPNR0002      |
| Length  | 14cm          |
| Weight  | 50gm          |
| Pack    | 6             |
| GTIN    | 8906180022387 |



| PRODUCT | SPOON SOUP    |
|---------|---------------|
| CODE    | SPNR0006      |
| Length  | 14cm          |
| Weight  | 60gm          |
| Pack    | 6             |
| GTIN    | 8906180022394 |

# Spoon



| PRODUCT | BABY SOUP     |
|---------|---------------|
| CODE    | SPNR0003      |
| Length  | 15cm          |
| Weight  | 60gm          |
| Pack    | 6             |
| GTIN    | 8906180022400 |



| PRODUCT | DESERT        |
|---------|---------------|
| CODE    | SPNR0007      |
| Length  | 15cm          |
| Weight  | 50gm          |
| Pack    | 6             |
| GTIN    | 8906180022417 |



| PRODUCT | TEA SPOON     |
|---------|---------------|
| CODE    | SPNR0010      |
| Length  | 13cm          |
| Weight  | 40gm          |
| Pack    | 6             |
| GTIN    | 8906180022424 |



| PRODUCT | FRUIT FORK    |
|---------|---------------|
| CODE    | FORK0003      |
| Length  | 15cm          |
| Weight  | 40gm          |
| Pack    | 6             |
| GTIN    | 8906180022431 |



| PRODUCT | DINNER FORK   |
|---------|---------------|
| CODE    | FORK0001      |
| Length  | 16cm          |
| Weight  | 40gm          |
| Pack    | 6             |
| GTIN    | 8906180022448 |



| PRODUCT | HOTEL SPOON   |
|---------|---------------|
| CODE    | SPNR0008      |
| Length  | 14cm          |
| Weight  | 40gm          |
| Pack    | 6             |
| GTIN    | 8906180022455 |



| PRODUCT | HOTEL FORK    |
|---------|---------------|
| CODE    | FORK0002      |
| Length  | 14cm          |
| Weight  | 40gm          |
| Pack    | 6             |
| GTIN    | 8906180022462 |



| PRODUCT | COFFEE SPOON  |
|---------|---------------|
| CODE    | SPNR0009      |
| Length  | 20cm          |
| Weight  | 60gm          |
| Pack    | 6             |
| GTIN    | 8906180022479 |



| PRODUCT | I/C SPOON     |
|---------|---------------|
| CODE    | SPNR0011      |
| Length  | 13cm          |
| Weight  | 40gm          |
| Pack    | 6             |
| GTIN    | 8906180022486 |

# Spoon



| PRODUCT | BUTTER KNIFE  |
|---------|---------------|
| CODE    | KNBU0001      |
| Length  | 20cm          |
| Weight  | 70gm          |
| Pack    | 6             |
| GTIN    | 8906180022493 |



| PRODUCT | SOUP DEEP     |
|---------|---------------|
| CODE    | SPNR0004      |
| Length  | 14cm          |
| Weight  | 100gm         |
| Pack    | 6             |
| GTIN    | 8906180022509 |



| PRODUCT | SOUP (LARGE)  |
|---------|---------------|
| CODE    | SPNR0005      |
| Length  | 16cm          |
| Weight  | 70gm          |
| Pack    | 6             |
| GTIN    | 8906180022516 |



| PRODUCT | MASALA        |
|---------|---------------|
| CODE    | SPNR0012      |
| Length  | 8cm           |
| Weight  | 25gm          |
| Pack    | 6             |
| GTIN    | 8906180022523 |



| PRODUCT | SERVING SPOON CURVE (Small) |
|---------|-----------------------------|
| CODE    | SPNS0002                    |
| Length  | 19cm                        |
| Weight  | 100gm                       |
| Pack    | 6                           |
| GTIN    | 8906180022530               |



| PRODUCT | SERVING SPOON CURVE (Large) |
|---------|-----------------------------|
| CODE    | SPNS0001                    |
| Length  | 23cm                        |
| Weight  | 120gm                       |
| Pack    | 6                           |
| GTIN    | 8906180022530               |



| PRODUCT | SERVING SPOON STRAIGHT (Small) |
|---------|--------------------------------|
| CODE    | SPNS0004                       |
| Length  | 19cm                           |
| Weight  | 100gm                          |
| Pack    | 6                              |
| GTIN    | 8906180022554                  |



| PRODUCT | SERVING SPOON CURVE (Large) |
|---------|-----------------------------|
| CODE    | SPNS0003                    |
| Length  | 22cm                        |
| Weight  | 120gm                       |
| Pack    | 6                           |
| GTIN    | 8906180022561               |



| PRODUCT | SERVING SPOON RICE |
|---------|--------------------|
| CODE    | SPNS0005           |
| Length  | 21cm               |
| Weight  | 140gm              |
| Pack    | 6                  |
| GTIN    | 8906180022578      |

# Spoon



| PRODUCT | DOSA SPATULA  |
|---------|---------------|
| CODE    | SPNS0006      |
| Length  | 25cm          |
| Weight  | 160gm         |
| Pack    | 6             |
| GTIN    | 8906180022585 |



| PRODUCT | FARSAN SERVING |
|---------|----------------|
| CODE    | SPNS0007       |
| Length  | 24cm           |
| Weight  | 150gm          |
| Pack    | 6              |
| GTIN    | 8906180022592  |



| PRODUCT | ACHMANI       |
|---------|---------------|
| CODE    | SPNR0013      |
| Length  | 13cm          |
| Weight  | 65gm          |
| Pack    | 6             |
| GTIN    | 8906180022608 |



| PRODUCT | SNAKE ACHMANI |
|---------|---------------|
| CODE    | SPNR0014      |
| Length  | 18cm          |
| Weight  | 120gm         |
| Pack    | 6             |
| GTIN    | 8906180022615 |



| PRODUCT | HAMMERED ACHMANI |
|---------|------------------|
| CODE    | SPNR0015         |
| Length  | 14cm             |
| Weight  | 60gm             |
| Pack    | 6                |
| GTIN    | 8906180022622    |



# Ruby



| PRODUCT | DESERT SPOON  |
|---------|---------------|
| CODE    | SPNRU0002     |
| Length  | 15cm          |
| Weight  | 55gm          |
| Pack    | 6             |
| GTIN    | 8906180022639 |



| PRODUCT | LARGE SPOON   |
|---------|---------------|
| CODE    | SPNRU0002     |
| Length  | 15cm          |
| Weight  | 55gm          |
| Pack    | 6             |
| GTIN    | 8906180022646 |



# Ruby Spoon



| PRODUCT | SMALL SPOON   |
|---------|---------------|
| CODE    | SPNRU0003     |
| Length  | 13cm          |
| Weight  | 45gm          |
| Pack    | 6             |
| GTIN    | 8906180022653 |



| PRODUCT | TEA SPOON     |
|---------|---------------|
| CODE    | SPNRU0004     |
| Length  | 11cm          |
| Weight  | 35gm          |
| Pack    | 6             |
| GTIN    | 8906180022660 |



| PRODUCT | I/C SPOON     |
|---------|---------------|
| CODE    | SPNRU0005     |
| Length  | 12cm          |
| Weight  | 40gm          |
| Pack    | 6             |
| GTIN    | 8906180022677 |



| PRODUCT | LARGE FORK    |
|---------|---------------|
| CODE    | FORKRU0001    |
| Length  | 17cm          |
| Weight  | 65gm          |
| Pack    | 6             |
| GTIN    | 8906180022684 |



| PRODUCT | SMALL FORK    |
|---------|---------------|
| CODE    | FORKU0002     |
| Length  | 15cm          |
| Weight  | 45gm          |
| Pack    | 6             |
| GTIN    | 8906180022691 |



| PRODUCT | SERVING SPOON RUBY<br>DESERT OVAL (Small) |
|---------|---|
| CODE    | SPNRU0007                                 |
| Length  | 21cm                                      |
| Weight  | 100gm                                     |
| Pack    | 6   |
| GTIN    | 8906180022707                             |



| PRODUCT | SERVING SPOON RUBY<br>DESERT OVAL (Large) |
|---------|---|
| CODE    | SPNRU0006                                 |
| Length  | 26cm                                      |
| Weight  | 170gm                                     |
| Pack    | 6   |
| GTIN    | 8906180022714                             |



| PRODUCT | SERVING SPOON RUBY<br>DESERT ROUND (Small) |
|---------|--|
| CODE    | SPNRU0009                                  |
| Length  | 21cm                                       |
| Weight  | 100gm                                      |
| Pack    | 6  |
| GTIN    | 8906180022721                              |



| PRODUCT | SERVING SPOON RUBY<br>DESERT ROUND (Large) |
|---------|--|
| CODE    | SPNRU0008                                  |
| Length  | 26cm                                       |
| Weight  | 170gm                                      |
| Pack    | 6  |
| GTIN    | 8906180022738                              |

# Ruby Spoon



| PRODUCT | SERVING SPOON RUBY<br>DESERT LIQUID (Small) |
|---------|---|
| CODE    | SPNRU0011                                   |
| Length  | 20cm  |
| Weight  | 130gm                                       |
| Pack    | 6   |
| GTIN    | 8906180022745                               |

| PRODUCT | SERVING SPOON RUBY<br>DESERT LIQUID (Large) |
|---------|---|
| CODE    | SPNRU0010                                   |
| Length  | 24cm  |
| Weight  | 200gm                                       |
| Pack    | 6   |
| GTIN    | 8906180022752                               |

| PRODUCT | ROMAN TEA     |
|---------|---------------|
| CODE    | SPNRO0001     |
| Length  | 11cm          |
| Weight  | 40gm          |
| Pack    | 6             |
| GTIN    | 8906180022769 |

# Roman Spoon



| PRODUCT | SPOON<br>ROMAN BABY |
|---------|---------------------|
| CODE    | SPNRO0002           |
| Length  | 15cm                |
| Weight  | 50gm                |
| Pack    | 6                   |
| GTIN    | 8906180022776       |

| PRODUCT | SPOON ROMAN<br>REGULAR |
|---------|------------------------|
| CODE    | SPNRO0003              |
| Length  | 18cm                   |
| Weight  | 70gm                   |
| Pack    | 6                      |
| GTIN    | 8906180022783          |

| PRODUCT | FORK ROMAN<br>DINNER |
|---------|----------------------|
| CODE    | FORK0001             |
| Length  | 16cm                 |
| Weight  | 40gm                 |
| Pack    | 6                    |
| GTIN    |                      |

| PRODUCT | ROMAN SERVING<br>SPOON |
|---------|------------------------|
| CODE    | SPNRO0005              |
| Length  | 20cm                   |
| Weight  | 150gm                  |
| Pack    | 6                      |
| GTIN    | 8906180022806          |



| PRODUCT | NAPKIN RING   |
|---------|---------------|
| CODE    | NKRR0001      |
| Weight  | 50gm          |
| Dia     | 2.20"         |
| Pack    | 2             |
| GTIN    | 8906180023933 |





# Handi



| ITEM CODE | PRODUCT            | DIA   | CAPACITY | HEIGHT | WEIGHT | PACK  | GTIN          |
|-----------|--------------------|-------|----------|--------|--------|-------|---------------|
| HANR0240  | HANDI WITH LID 0   | 3.75" | 240 ml   | 1.75"  | 350gm  | 2 pcs | 8906180022813 |
| HANR0420  | HANDI WITH LID 1   | 4.50" | 420 ml   | 2.25"  | 600gm  | 2 pcs | 8906180022820 |
| HANR0750  | HANDI WITH LID 2   | 5.50" | 750 ml   | 2.50"  | 800gm  | 1 pc  | 8906180022837 |
| HANR1000  | HANDI WITH LID 2.5 | 6.00" | 1000 ml  | 2.60"  | 1150gm | 1 pc  | 8906180022844 |
| HANR1500  | HANDI WITH LID 3   | 7.25" | 1500 ml  | 2.75"  | 1450gm | 1 pc  | 8906180022851 |
| HANR2500  | HANDI WITH LID 4   | 9.00" | 2500 ml  | 3.10"  | 2050gm | 1 pc  | 8906180022868 |



# Handi



| PRODUCT  | HANDI PANEER S |
|----------|----------------|
| CODE     | HANP0350       |
| Capacity | 350ml.         |
| Height   | 1.25"          |
| Weight   | 480gm          |
| Dia      | 7.00"          |
| Pack     | 2              |
| GTIN     | 8906180022875  |



| PRODUCT  | HANDI PANEER L |
|----------|----------------|
| CODE     | HANP0450       |
| Capacity | 450ml.         |
| Height   | 1.50"          |
| Weight   | 650gm          |
| Dia      | 7"             |
| Pack     | 2              |
| GTIN     | 8906180022882  |



| PRODUCT  | HANDI APPLE S |
|----------|---------------|
| CODE     | HANA0500      |
| Capacity | 500ml.        |
| Height   | 5.50"         |
| Weight   | 1000gm        |
| Dia      | 1.50"         |
| Pack     | 2             |
| GTIN     | 8906180022899 |



| PRODUCT  | HANDI APPLE L |
|----------|---------------|
| CODE     | HANA0500      |
| Capacity | 900ml.        |
| Height   | 6.50"         |
| Weight   | 1150gm        |
| Dia      | 2.40"         |
| Pack     | 2             |
| GTIN     | 8906180022905 |

# Handi



| PRODUCT  | HANDI CURVE (Small)<br>WITH LID |
|----------|---------------------------------|
| CODE     | HANM0700                        |
| Capacity | 700ml.                          |
| Height   | 2.40"                           |
| Weight   | 1050gm                          |
| Dia      | 5.25"                           |
| Pack     | 2                               |
| GTIN     | 8906180022912                   |



| PRODUCT  | HANDI CURVE (Large)<br>WITH LID |
|----------|---------------------------------|
| CODE     | HANP0450                        |
| Capacity | 1250ml.                         |
| Height   | 3.00"                           |
| Weight   | 1250gm                          |
| Dia      | 7"                              |
| Pack     | 2                               |
| GTIN     | 8906180022929                   |

# Boat



| ITEM<br>CODE | PRODUCT           | DIA   | HEIGHT | WEIGHT | PACK  | GTIN          |
|--------------|-------------------|-------|--------|--------|-------|---------------|
| HANB0200     | HANDI BOAT SMALL  | 2.10" | 2.10"  | 400gm  | 2 pcs | 8906180022936 |
| HANB0340     | HANDI BOAT MEDIUM | 7.25" | 2.25"  | 600gm  | 2 pcs | 8906180022943 |
| HANB0750     | HANDI BOAT LARGE  | 8.50" | 3.90"  | 1150gm | 2 pcs | 8906180022950 |

# Handi



| ITEM CODE | PRODUCT                        | CAPACITY | DIA   | HEIGHT | WEIGHT | PACK  | GTIN          |
|-----------|--------------------------------|----------|-------|--------|--------|-------|---------------|
| HANR0700  | Handi - Ruby (Small) with Lid  | 700ml.   | 8.00" | 2.00"  | 1300gm | 2 pcs | 8906180022967 |
| HANR1000  | Handi - Ruby (Medium) with Lid | 1000ml.  | 9.00" | 2.25"  | 1600gm | 2 pcs | 8906180022974 |
| HANR1500  | Handi - Ruby (Large) with Lid  | 1500ml.  | 9.75" | 2.60"  | 1800gm | 2 pcs | 8906180022981 |

# Kadai Ruby



| ITEM CODE | PRODUCT    | CAPACITY | DIA    | HEIGHT | WEIGHT | PACK | GTIN          |
|-----------|------------|----------|--------|--------|--------|------|---------------|
| KADRU1000 | KADAI RUBY | 1000ml.  | 8.00"  | 4.00"  | 1000gm |      | 8906180022998 |
| KADRU1400 | KADAI RUBY | 1400ml.  | 9.00"  | 4.25"  | 1200gm |      | 8906180023001 |
| KADRU2000 | KADAI RUBY | 2000ml.  | 10.00" | 4.50"  | 1500gm |      | 8906180023018 |
| KADRU2500 | KADAI RUBY | 2500ml.  | 11.00" | 5.25"  | 1500gm |      | 8906180023025 |
| KADRU4000 | KADAI RUBY | 4000ml.  | 12.00" | 5.25"  | 3300gm |      | 8906180023032 |



# Kadai



| ITEM CODE | PRODUCT                   | CAPACITY | DIA    | HEIGHT | WEIGHT | PACK | GTIN          |
|-----------|---------------------------|----------|--------|--------|--------|------|---------------|
| KADH2400  | KADAI WITH HANDLE (SMALL) | 2400ml.  | 9.25"  | 3.00"  | 1200gm |      | 8906180023056 |
| KADH4000  | KADAI WITH HANDLE (LARGE) | 4000ml.  | 10.50" | 3.50"  | 1300gm |      | 8906180023063 |

# Kadai



| ITEM CODE | PRODUCT       | CAPACITY | DIA    | HEIGHT | WEIGHT | GTIN          |
|-----------|---------------|----------|--------|--------|--------|---------------|
| KADS2400  | KADAI (SMALL) | 2400ml.  | 9.25"  | 3.40"  | 1000gm | 8906180023063 |
| KADL4000  | KADAI (LARGE) | 4000ml.  | 10.50" | 3.75"  | 1100gm | 8906180023056 |

| PRODUCT  | TASLA KADAI   |
|----------|---------------|
| CODE     | TASR0875      |
| Capacity | 900ml.        |
| Height   | 2.50"         |
| Weight   | 980gm         |
| Dia      | 8.75"         |
| Pack     | 6             |
| GTIN     | 8906180021878 |



# Deep Hot Plate



| ITEM CODE | PRODUCT        | DIA    | HEIGHT | WEIGHT | GTIN          |
|-----------|----------------|--------|--------|--------|---------------|
| HOTP0800  | DEEP HOT PLATE | 8.00"  | 0.50"  | 950gm  | 8906180023087 |
| HOTP0825  | DEEP HOT PLATE | 8.25"  | 0.75"  | 1000gm | 8906180023094 |
| HOTP0100  | DEEP HOT PLATE | 10.00" | 1.75"  | 1300gm | 8906180023100 |
| HOTP0975  | PLATE          | 9.75"  | 1.00"  | 950gm  | 8906180023117 |

# Appam



| ITEM CODE | PRODUCT  | DIA   | HEIGHT | WEIGHT | PACK          |
|-----------|----------|-------|--------|--------|---------------|
| APMR0700  | APPAM 7C | 7.00" | 1.50"  | 1800gm | 8906180023124 |
| APMR0700  | APPAM 7O | 7.00" | 1.50"  | 1200gm | 8906180023131 |
| APMR0900  | APPAM 9C | 9.00" | 1.50"  | 2800gm | 8906180023148 |
| APMR0900  | APPAM 9O | 9.00" | 1.50"  | 1800gm | 8906180023155 |

# Cookware



| PRODUCT  | DOSA MAKER    |
|----------|---------------|
| CODE     | DTAW0001      |
| Capacity | -             |
| Height   | 0.30"         |
| Weight   | 2140gm        |
| Dia      | 13.00"        |
| Pack     | -             |
| GTIN     | 8906180023162 |



| PRODUCT  | KARAKAM       |
|----------|---------------|
| CODE     | KRKM2000      |
| Capacity | 2000ml.       |
| Height   | 3.90"         |
| Weight   | 1300gm        |
| Dia      | 8.00"         |
| Pack     | -             |
| GTIN     | 8906180023179 |



| PRODUCT  | FRYING PAN    |
|----------|---------------|
| CODE     | FPAN0860      |
| Capacity | 800ml.        |
| Height   | 1.50"         |
| Weight   | 850gm         |
| Dia      | 8.60"         |
| Pack     | -             |
| GTIN     | 8906180023186 |



| PRODUCT  | TEA PAN SMALL |
|----------|---------------|
| CODE     | TPAN1200      |
| Capacity | 1200ml.       |
| Height   | 3.50"         |
| Weight   | 700gm         |
| Dia      | 5.50"         |
| Pack     | -             |
| GTIN     | 8906180023193 |



| PRODUCT  | TEA PAN LARGE |
|----------|---------------|
| CODE     | TPAN1500      |
| Capacity | 1500ml.       |
| Height   | 4.00"         |
| Weight   | 900gm         |
| Dia      | 6.00"         |
| Pack     | -             |
| GTIN     | 8906180023209 |





*Top*

| ITEM CODE | PRODUCT      | CAPACITY | DIA   | HEIGHT | WEIGHT | PACK | PACK          |
|-----------|--------------|----------|-------|--------|--------|------|---------------|
| TOPE1500  | TOP MED      | 1000ml.  | 6.75" | 3.25"  | 800gm  |      | 8906180023216 |
| TOPE0750  | TOP SMALL    | 750ml.   | 5.50" | 2.75"  | 550gm  |      | 8906180023223 |
| TOPE1900  | TOP LARGE    | 1900ml.  | 7.25" | 3.60"  | 950gm  |      | 8906180023230 |
| TOPE2300  | TOP X LARGE  | 2300ml.  | 8.00" | 4.00"  | 1100gm |      | 8906180023247 |
| TPVE1300  | TOP VERTICAL | 1300ml.  | 6.00" | 6.00"  | 1050gm |      | 8906180023254 |





# Jug

| PRODUCT  | JUG - PIPE (SMALL) WITH LID | JUG - PIPE (LARGE) WITH LID |
|----------|-----------------------------|-----------------------------|
| CODE     | JUGS0900                    | JUGL1500                    |
| Capacity | 900ml.                      | 1500ml.                     |
| Height   | 5.50"                       | 5.25"                       |
| Weight   | 980gm                       | 1350gm                      |
| Dia      | 4.25"                       | 6.75"                       |
| Pack     | 1                           | 1                           |
| GTIN     | 8906180023261               |                             |



| PRODUCT  | JUG - DAMRU WITH LID | JUG - DAMRU (SMALL) WITH LID |
|----------|----------------------|------------------------------|
| CODE     | JUGD1500             | JUGDS0850                    |
| Capacity | 1500ml.              | 850ml.                       |
| Height   | 7.20"                | 5.26"                        |
| Weight   | 1350gm               | 980gm                        |
| Dia      | 4.00"                | 3.25"                        |
| Pack     | 1                    | 1                            |
| GTIN     |                      |                              |



# Box



| PRODUCT  | NASTA BOX     |
|----------|---------------|
| CODE     | BOXN0475      |
| Capacity | 250ml.        |
| Height   | 1.90"         |
| Weight   | 450gm         |
| Dia      | 4.75"         |
| Pack     | 1             |
| GTIN     | 8906180023308 |



| PRODUCT  | ROTI BOX      |
|----------|---------------|
| CODE     | BOXR0800      |
| Capacity | 1350ml.       |
| Height   | 2.50"         |
| Weight   | 1550gm        |
| Dia      | 8.00"         |
| Pack     | 1             |
| GTIN     | 8906180023315 |



| PRODUCT  | Spice Box (Masala Box) |
|----------|------------------------|
| CODE     | BOXM0800               |
| Capacity | 2550ml.                |
| Height   | 280"                   |
| Weight   | 1550gm                 |
| Dia      | 8.00"                  |
| Pack     | 1                      |
| GTIN     | 8906180023322          |

Box Contain:

Inside Spice Box

7 Nos Wati | (D) 2.25" | (H) 1.50

1 Nos Bowl | (D) 3.10" | (H) 1.25" | (V) 130ml | (W) 120gm

1 Nos Spoon - Masala | (L) 8cm | (W) 25gm





# Box



| PRODUCT  | TIFFIN BOX    |
|----------|---------------|
| CODE     | BOXT0200      |
| Capacity | 300ml.        |
| Height   | 2.00"         |
| Weight   | 370gm         |
| Dia      | 4.25"         |
| Pack     | 1             |
| GTIN     | 8906180023339 |



| PRODUCT  | LUNCH BOX     |
|----------|---------------|
| CODE     | BOXL0650      |
| Capacity | 250ml.        |
| Height   | 1.30"         |
| Weight   | 1500gm        |
| Dia      | 6.50"         |
| Pack     | 1             |
| GTIN     | 8906180023346 |



# Urli



| ITEM CODE | PRODUCT | CAPACITY | DIA    | HEIGHT | WEIGHT |
|-----------|---------|----------|--------|--------|--------|
| URLI1500  | URLI    | 1500ml.  | 8.00"  | 3.25"  | 1500gm |
| URLI2000  | URLI    | 2000ml.  | 9.00"  | 3.50"  | 1600gm |
| URLI3000  | URLI    | 3000ml.  | 10.00" | 3.50"  | 2100gm |
| URLI3500  | URLI    | 3500ml.  | 11.00" | 3.75"  | 2500gm |
| URLI5000  | URLI    | 5000ml.  | 12.25" | 4.00"  | 2900gm |



# Pooja



| PRODUCT  | LOTA - POOJA  |
|----------|---------------|
| CODE     | LOTP0375      |
| Capacity | 750ml.        |
| Height   | 1.90"         |
| Weight   | 560gm         |
| Dia      | 4.25"         |
| Pack     | 2             |
| GTIN     | 8906180023407 |



| PRODUCT  | LOTA - PADGHI |
|----------|---------------|
| CODE     | LOTPA0400     |
| Capacity | 700ml.        |
| Height   | 1.90"         |
| Weight   | 730gm         |
| Dia      | 4.25"         |
| Pack     | 2             |
| GTIN     | 8906180023414 |



| PRODUCT  | LOTA - SATARI (SMALL) |
|----------|-----------------------|
| CODE     | LOTSS0325             |
| Capacity | 425ml.                |
| Height   | 3.50"                 |
| Weight   | 500gm                 |
| Dia      | 3.25"                 |
| Pack     | 2                     |
| GTIN     | 8906180023421         |



# Pooja



| PRODUCT  | LOTA - SATARI (LARGE) |
|----------|-----------------------|
| CODE     | LOTSL0325             |
| Capacity | 485ml.                |
| Height   | 4.00"                 |
| Weight   | 550gm                 |
| Dia      | 3.25"                 |
| Pack     | 2                     |
| GTIN     | 8906180023438         |



| PRODUCT  | LOTA - PARSI  |
|----------|---------------|
| CODE     | LOTPR0325     |
| Capacity | 500ml.        |
| Height   | 1.90"         |
| Weight   | 540gm         |
| Dia      | 4.75"         |
| Pack     | 2             |
| GTIN     | 8906180023445 |



| PRODUCT  | LOTI GHEE WITH SPOON |
|----------|----------------------|
| CODE     | LOTG0300             |
| Capacity | 220ml.               |
| Height   | 2.40"                |
| Weight   | 385gm                |
| Dia      | 3.00"                |
| Pack     | 2                    |
| GTIN     | 8906180023452        |



| PRODUCT  | LOTI (SMALL)  |
|----------|---------------|
| CODE     | LOTS0325      |
| Capacity | 300ml.        |
| Height   | 3.00"         |
| Weight   | 90gm          |
| Dia      | 3.25"         |
| Pack     | 4             |
| GTIN     | 8906180023476 |



| PRODUCT  | LOTI FOR GHEE WITH LID & SPOON |
|----------|--------------------------------|
| CODE     | GLOTSPN01                      |
| Capacity | 300ml.                         |
| Height   | 2.90"                          |
| Weight   | 400gm                          |
| Dia      | 3.25"                          |
| Pack     | 1                              |
| GTIN     | 8906180023483                  |



| PRODUCT  | LOTI FOR OIL WITH LID & SPOON |
|----------|-------------------------------|
| CODE     | OLOTSPN02                     |
| Capacity | 400ml.                        |
| Height   | 4.00"                         |
| Weight   | 550gm                         |
| Dia      | 3.00"                         |
| Pack     | 1                             |
| GTIN     | 8906180023490                 |



| PRODUCT  | WADHI GHEE    |
|----------|---------------|
| CODE     | WGHR0700      |
| Capacity | -             |
| Height   | 2.25"         |
| Weight   | 475gm         |
| Dia      | 7.00"         |
| Pack     | 2             |
| GTIN     | 8906180023476 |



| PRODUCT  | DIVI - 5 MUKHI (VAT) |
|----------|----------------------|
| CODE     | DIVI0250             |
| Capacity | -                    |
| Height   | 2.50"                |
| Weight   | 110gm                |
| Dia      | 3.25"                |
| Pack     | 4                    |
| GTIN     | 8906180023513        |



# Pooja



| PRODUCT  | DIVI - 5 MUKHI (VAT) |
|----------|----------------------|
| CODE     | DIVI0150             |
| Capacity | -                    |
| Height   | 1.50"                |
| Weight   | 65gm                 |
| Dia      | 1.75"                |
| Pack     | 4                    |
| GTIN     | 8906180023520        |



| PRODUCT  | DIVI          |
|----------|---------------|
| CODE     | DIVI0190      |
| Capacity | -             |
| Height   | 1.90"         |
| Weight   | 70gm          |
| Dia      | 1.90"         |
| Pack     | 4             |
| GTIN     | 8906180023537 |



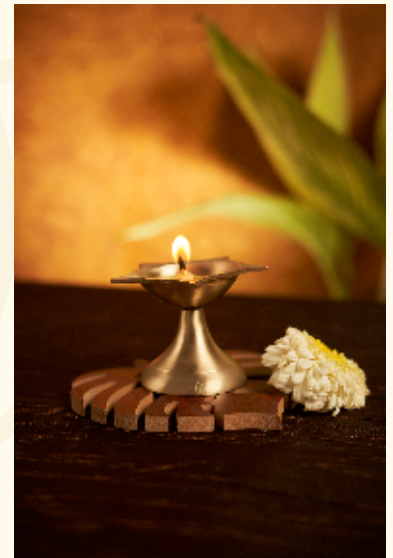
| PRODUCT  | DIVI          |
|----------|---------------|
| CODE     | DIVIR0075     |
| Capacity | -             |
| Height   | 1.75"         |
| Weight   | 75gm          |
| Dia      | 1.75"         |
| Pack     | 4             |
| GTIN     | 8906180023544 |



| PRODUCT  | DHUP STAND    |
|----------|---------------|
| CODE     | DHUPR001      |
| Capacity | -             |
| Height   | 0.50"         |
| Weight   | 60gm          |
| Dia      | 0.90"         |
| Pack     | 4             |
| GTIN     | 8906180023551 |



| PRODUCT  | DHUP STAND (Large) |
|----------|--------------------|
| CODE     | DHUPR002           |
| Capacity | -                  |
| Height   | 1.40"              |
| Weight   | 50gm               |
| Dia      | 0.90"              |
| Pack     | 4                  |
| GTIN     | 8906180023568      |



| ITEM CODE | PRODUCT   | DIA   | WEIGHT | HEIGHT | PACK | GTIN          |
|-----------|-----------|-------|--------|--------|------|---------------|
| HBLR0500  | HAND BELL | 1.40" | 300gm  | 5.00"  | -    | 8906180023575 |
| HBLR0550  | HAND BELL | 1.90" | 410gm  | 5.50"  | -    | 8906180023582 |
| HBLR0850  | HAND BELL | 3.60" | 500gm  | 8.50"  | -    | 8906180023599 |

# Health



| ITEM CODE | PRODUCT  | DIA   | CAPACITY | WEIGHT | HEIGHT | PACK | GTIN          |
|-----------|----------|-------|----------|--------|--------|------|---------------|
| TAVW0130  | TAV WATI | 1.30" | 50ml.    | 25gm   | 0.70"  | 6    | 8906180023605 |
| TAVW0150  | TAV WATI | 1.50" | 60ml.    | 35gm   | 0.70"  | 6    | 8906180023612 |
| TAVW0250  | TAV WATI | 2.50" | 70ml.    | 65gm   | 1.25"  | 6    | 8906180023629 |
| TAVW0290  | TAV WATI | 2.90" | 100ml.   | 80gm   | 1.25"  | 6    | 8906180023636 |
| TAVW0325  | TAV WATI | 3.25" | 100ml.   | 100gm  | 1.25"  | 6    | 8906180023643 |



| PRODUCT | GAUSHA (Small) |
|---------|----------------|
| CODE    | GAUS0275       |
| Weight  | 90gm           |
| Dia     | 2.75"          |
| Pack    | 5              |
| GTIN    | 8906180023650  |

| PRODUCT | GAUSHA (Large) |
|---------|----------------|
| CODE    | GAUL0400       |
| Weight  | 100gm          |
| Dia     | 4.00"          |
| Pack    | 5              |
| GTIN    | 8906180023667  |

| PRODUCT | GAUSHA (Square) |
|---------|-----------------|
| CODE    | GAUL0400        |
| Weight  | 270gm           |
| Dia     | 3.90"           |
| Pack    | 5               |
| GTIN    | 8906180023674   |

# Health



| PRODUCT | GAUSHA (Boomerang) |
|---------|--------------------|
| CODE    | GAUB0390           |
| Weight  | 220gm              |
| Dia     | 3.90"              |
| Pack    | 5                  |
| GTIN    | 8906180023681      |



| PRODUCT | MASSAGER Handy (Small) |
|---------|------------------------|
| CODE    | MGRHS001               |
| Weight  | 100gm                  |
| Height  | 2.50"                  |
| Pack    | 2                      |
| GTIN    | 8906180023698          |



| PRODUCT | MASSAGER Handy (Rough) |
|---------|------------------------|
| CODE    | MGRHR002               |
| Weight  | 230gm                  |
| Height  | 4.00"                  |
| Pack    | 2                      |
| GTIN    | 8906180023704          |



| PRODUCT | MASSAGER (Small) |
|---------|------------------|
| CODE    | MGRLS003         |
| Weight  | 110gm            |
| Height  | 5.50"            |
| Pack    | 2                |
| GTIN    | 8906180023735    |



| PRODUCT | MASSAGER (Medium) |
|---------|-------------------|
| CODE    | MGRLM004          |
| Weight  | 190gm             |
| Height  | 5.50"             |
| Pack    | 2                 |
| GTIN    | 8906180023728     |



| PRODUCT | MASSAGER (Large) |
|---------|------------------|
| CODE    | MGRLL005         |
| Weight  | 230gm            |
| Height  | 5.50"            |
| Pack    | 2                |
| GTIN    | 8906180023735    |



| PRODUCT | MASSAGER Handy (Rough) |
|---------|------------------------|
| CODE    | MGRLR006               |
| Weight  | 225gm                  |
| Height  | 5.75"                  |
| Pack    | 2                      |
| GTIN    | 8906180023742          |



| PRODUCT | DOUBLE SIDE MASSAGER |
|---------|----------------------|
| CODE    | MGRR0007             |
| Weight  | 215gm                |
| Height  | 6.00"                |
| Pack    | 2                    |
| GTIN    | 8906180023759        |





# Health



| PRODUCT  | KHAL DASTO    |
|----------|---------------|
| CODE     | KLDR0340      |
| Capacity | 250ml.        |
| Height   | 3.90"         |
| Weight   | 702gm         |
| Dia      | 3.40"         |
| Pack     | -             |
| GTIN     | 8906180023766 |



| PRODUCT | MASSAGER COMB |
|---------|---------------|
| CODE    | COMB0390      |
| Length  | 3.90"         |
| Height  | 0.10"         |
| Weight  | 100gm         |
| Dia     | -             |
| Pack    | 5             |
| GTIN    | 8906180023773 |



| PRODUCT | COMB          |
|---------|---------------|
| CODE    | COMB0200      |
| Length  | 2.00"         |
| Height  | 0.10"         |
| Weight  | 110gm         |
| Dia     | -             |
| Pack    | -             |
| GTIN    | 8906180023780 |



| PRODUCT  | AROGIYU       |
|----------|---------------|
| CODE     | AROG0300      |
| Capacity | -             |
| Height   | 1.75"         |
| Weight   | 60gm          |
| Dia      | 3.00"         |
| Pack     | -             |
| GTIN     | 8906180023797 |





# Ghant



| ITEM CODE | PRODUCT       | DIA   | HEIGHT | WEIGHT | PACK  | GTIN          |
|-----------|---------------|-------|--------|--------|-------|---------------|
| GNTR0350  | GHANT         | 3.50" | 4.75"  | 600gm  | 2 pcs | 8906180023803 |
| GNTR00500 | GHANT         | 5.00" | 6.60"  | 1000gm | 1 pc  | 8906180023810 |
| GNTR0600  | GHANT         | 6.00" | 7.70"  | 2100gm | 1 pc  | 8906180023827 |
| GNTR0700  | GHANT         | 7.00" | 8.00"  | 2200gm | 1 pc  | 8906180023834 |
| GNTR0800  | GHANT         | 8.00" | 9.00"  | 8000gm | 1 pc  | 8906180023841 |
| GNTC0625  | GHANT CARVING | 6.25" | 8.00"  | 2280gm | 1 pc  | 8906180023858 |



# Manjira



| ITEM CODE | PRODUCT          | DIA   | WEIGHT | PACK | GTIN          |
|-----------|------------------|-------|--------|------|---------------|
| MANS0300  | Manjira (Small)  | 3.00" | 350gm  | 2    | 8906180023865 |
| MANS0450  | Manjira (Medium) | 4.50" | 500gm  | 2    | 8906180023872 |
| MANL0560  | Manjira (Large)  | 5.60" | 700gm  | 2    | 8906180023889 |

|              |               |
|--------------|---------------|
| PRODUCT CODE | ZALAR SMALL   |
| Weight       | 500gm         |
| Dia          | -             |
| Pack         | 2             |
| GTIN         | 8906180023896 |



# Danka

| ITEM CODE | PRODUCT | DIA   | WEIGHT | HEIGHT | PACK | GTIN          |
|-----------|---------|-------|--------|--------|------|---------------|
| MANS0300  | DANKA   | 6.00" | 400gm  | 1.00"  | 2    | 8906180023902 |
| MANS0450  | DANKA   | 7.00" | 600gm  | 1.00"  | 2    | 8906180023919 |
| MANL0560  | DANKA   | 7.75" | 600gm  | 1.10"  | 2    | 8906180023926 |





# Dinner Set

**ITEM CODE :** DSGTHS2025

**PRODUCT :** BRONZE GOLD DINNER SET (2 SETS)

Box Contains

- 1 Nos Gold Thali | (D) 11.00" | (H) 1.25" | (W) 480gm
- 1 Nos Gold Wati | (D) 3.25" | (H) 1.25" | (V) 130ml | (W) 70gm
- 1 Nos Halva Plate | (D) 4.25" | (H) 0.75" | (V) 150ml | (W) 80gm
- 1 Nos Spoon - Ruby (Large) | (L) 15cm | (W) 30gm
- 1 Nos Gold Glass - Bengal | (V) 250ml | (H) 3.15" | (D) 3.00" | (W) 100gm
- Premium Gift Box Packaging (L) 13.25cm (B) 13.25cm (H) 4.50cm

Total Items 10, Total Weight 1.72



D - Diameter | L - Length | B - Breadth | H - Height | V - Volume | W - Weight

# Dinner Set



**ITEM CODE :** DSGPLS2025

**PRODUCT : BRONZE GOLD DINNER SET (2 SETS)**

Box Contains

- 1 Nos Gold Plate | (D) 11.00" | (H) 0.75" | (W) 480gm
- 2 Nos Gold Bowl | (D) 3.30" | (H) 1.25" | (V) 130ml | (W) 70gm
- 1 Nos Spoon - Ruby (Large) | (L) 15cm | (W) 30gm
- 1 Nos Gold Glass - Kothi | (V) 250ml | (H) 3.25" | (D) 2.75" | (W) 100gm
- Premium Gift Box Packaging (L) 13.25cm (B) 13.25cm (H) 4.50cm

Total Items 10, Total Weight 1.6



**ITEM CODE :** DSTHLW0001

**PRODUCT : DINNER SET - PLATINUM**

Box Contains

- 1 Nos Thali | (D) 11.25" | (H) 1.25" | (W) 720gm
- 1 Nos Wati | (D) 3.10" | (H) 1.25" | (V) 130ml | (W) 120gm
- 1 Nos Halva Plate | (D) 4.25" | (H) 0.75" | (V) 150ml | (W) 120gm
- 1 Nos Spoon - Ruby (Large) | (L) 15cm | (W) 55gm
- 1 Nos Glass - Bengal | (V) 250ml | (H) 3.15" | (D) 3.00" | (W) 180gm
- Premium Gift Box Packaging (L) 13.25cm (B) 13.25cm (H) 4.50cm

Total Items 5, Total Weight 1.030kg



**ITEM CODE :** DSPLLW0002

**PRODUCT : DINNER SET - PLATINUM**

Box Contains

- 1 Nos Plate | (D) 12.10" | (H) 0.75" | (W) 800gm
- 1 Nos Bowl | (D) 3.30" | (H) 1.25" | (V) 130ml | (W) 120gm
- 1 Nos Halva Plate | (D) 4.25" | (H) 0.75" | (V) 150ml | (W) 120gm
- 1 Nos Spoon - Ruby (Large) | (L) 15cm | (W) 55gm
- 1 Nos Glass - Slim Kothi | (V) 250ml | (H) 3.40" | (D) 2.60" | (W) 180gm
- Premium Gift Box Packaging (L) 13.25cm (B) 13.25cm (H) 4.50cm

Total Items 5, Total Weight 1.010kg

**D - Diameter | L - Length | B - Breadth | H - Height | V - Volume | W - Weight**

# Dinner Set



**ITEM CODE :** DSDTLW0003

**PRODUCT : BRONZE DINNER SET - DELIGHT**

Box Contains

- 1 Nos Delight Thali | (D) 11" | (H) 1.25" | (W) 710 gm
- 1 Nos Bowl | (D) 3.30" | (H) 1.25" | (V) 130ml | (W) 120gm
- 1 Nos Halva Plate | (D) 4.25" | (H) 0.75" | (V) 150ml | (W) 120gm
- 1 Nos Spoon - Ruby (Large) | (L) 15cm | (W) 55gm
- 1 Nos Glass - Aamprapali | (V) 270ml | (H) 3.75" | (D) 2.60" | (W) 220gm
- Premium Gift Box Packaging (L) 13.25cm (B) 13.25cm (H) 4.50cm

Total Items 5, Total Weight 1.010kg



**ITEM CODE :** DSTHRT0146

**PRODUCT : BRONZE DINNER SET**

Box Contains

- 1 Nos Thali | (D) 11.25" | (H) 1.25" | (W) 720gm
- 1 Nos Wati | (D) 3.10" | (H) 1.25" | (V) 130ml | (W) 120gm
- 1 Nos Halva Plate | (D) 4.25" | (H) 0.75" | (V) 150ml | (W) 120gm
- 1 Nos Spoon - Ruby (Large) | (L) 15cm | (W) 55gm
- 1 Nos Glass - Bengal | (V) 250ml | (H) 3.15" | (D) 3.00" | (W) 180gm
- Premium Gift Box Packaging (L) 13.25cm (B) 13.25cm (H) 4.50cm

Total Items 5, Total Weight 1.030kg



**ITEM CODE :** DSTHRT0135

**PRODUCT : BRONZE DINNER SET**

Box Contains

- Nos Thali | (D) 10.25" | (H) 1.40" | (W) 670gm
- 1 Nos Wati | (D) 3.40" | (H) 1.50" | (V) 160ml | (W) 130gm
- 1 Nos Halva Plate | (D) 4.25" | (H) 0.75" | (V) 150ml | (W) 120gm
- 1 Nos Regular Spoon | (L) 15cm | (W) 60gm - 1 Nos Glass
- Kothi | (V) 250ml | (H) 3.25" | (D) 2.75" | (W) 180gm
- Premium Gift Box Packaging (L) 33.5cm (B) 33.5cm (H) 12cm

Total Items 5Total Weight 1.220kg

**D - Diameter | L - Length | B - Breadth | H - Height | V - Volume | W - Weight**



# Dinner Set



**ITEM CODE :** DSPLRP0135

**PRODUCT : BRONZE DINNER SET**

Box Contains

- 1 Nos Plate | (D) 11.40" | (H) 0.75" | (W) 700gm
- 1 Nos Bowl | (D) 3.75" | (H) 1.30" | (V) 150ml | (W) 130gm
- 1 Nos Halva Plate | (D) 4.25" | (H) 0.75" | (V) 150ml | (W) 120gm
- 1 Nos Regular Spoon | (L) 15cm | (W) 60gm
- 1 Nos Glass - Kothi (Slim) | (V) 250ml | (H) 3.40" | (D) 2.60" | (W) 180gm
- Royal Gift Box Packaging (L) 33.5cm (B) 33.5cm (H) 12cm

Total Items 5 Total Weight 1.220kg



**ITEM CODE :** DSPLRP0146

**PRODUCT : BRONZE DINNER SET**

Box Contains

- 1 Nos Plate | (D) 12.10" | (H) 0.75" | (W) 800gm
- 2 Nos Bowl | (D) 3.75" | (H) 1.30" | (V) 150ml | (W) 130gm
- 1 Nos Halva Plate | (D) 4.25" | (H) 0.75" | (V) 150ml | (W) 120gm
- 1 Nos Regular Spoon | (L) 15cm | (W) 60gm
- 1 Nos Glass - Chandi | (V) 250ml | (H) 3.25" | (D) 3.00" | (W) 180gm
- Royal Gift Box Packaging (L) 33.5cm (B) 33.5cm (H) 12cm

Total Items 6 Total Weight 1.350kg



**ITEM CODE :** DSPLKS0146

**PRODUCT : BRONZE DINNER SET (KESARI SET)**

Box Contains

- 1 Nos Plate | (D) 12.10" | (H) 0.75" | (W) 800gm
- 1 Nos Bowl | (D) 3.75" | (H) 1.30" | (V) 150ml | (W) 130gm
- 1 Nos Bowl | (D) 4.60" | (H) 1.50" | (V) 230ml | (W) 150gm
- 1 Nos Halva Plate - Deep | (D) 4.25" | (H) 1.00" | (V) 150ml | (W) 135gm
- 1 Nos Ruby Spoon (Large) | (L) 15cm | (W) 55gm
- 1 Nos Glass - Buttermilk | (V) 270ml | (H) 3.75" (D) 3.00" | (W) 230gm
- Royal Gift Box Packaging (L) 33.5cm (B) 33.5cm (H) 12cm

Total Items 6. Total Weight 1.350kg

**D - Diameter | L - Length | B - Breadth | H - Height | V - Volume | W - Weight**

# Dinner Set

**ITEM CODE :** DSTHK00146

**PRODUCT : BRONZE DINNER SET (KOTHI SET)**

Box Contains

- 1 Nos Thali | (D) 11.25" | (H) 1.25" | (W) 750gm
- 1 Nos Wati | (D) 3.40" | (H) 1.50" | (V) 160ml | (W) 130gm
- 1 Nos Wati | (D) 3.60" | (H) 1.60" | (V) 200ml | (W) 150gm
- 1 Nos Halva Plate - Deep | (D) 4.25" | (H) 1.00" | (V) 150ml | (W) 135gm
- 1 Nos Ruby Spoon (Large) | (L) 15cm | (W) 55gm
- 1 Nos Glass - Bombay | (V) 280ml | (H) 3.75" | (D) 3.00" | (W) 220gm
- Royal Gift Box Packaging (L) 33.5cm (B) 33.5cm (H) 12cm

Total Items 6, Total Weight 1.350kg



**ITEM CODE** DSSTHV0007

**PRODUCT : BRONZE DINNER SET - HAVELI**

Box Contains

**SILVER LINE DESIGN ON ALL ITEMS**

- 1 Nos Thali | (D) 12.75" | (H) 1.50" | (W) 1200gm
- 2 Nos Bowl | (D) 3.75" | (H) 1.30" | (V) 150ml | (W) 130gm
- 1 Nos Halva Plate - Deep | (D) 4.25" | (H) 1.00" | (V) 150ml | (W) 135gm
- 1 Nos Regular Soup Spoon | (L) 14cm | (W) 60gm
- 1 Nos Dinner Fork | (L) 16cm | (W) 40gm
- 1 Nos Glass - Kothi | (V) 250ml | (H) 3.25" | (D) 2.75" | (W) 180gm
- Royal Gift Box Packaging (L) 38.5cm (B) 38.5cm (H) 12cm

Total Items 7, Total Weight 1.870kg



**D - Diameter | L - Length | B - Breadth | H - Height | V - Volume | W - Weight**

# Dinner Set



**ITEM CODE :** DSTHPT1809

**PRODUCT : BRONZE PATIALA SET**

Box Contains

- 4 Nos Wati | (D) 3.60" | (H) 1.60" | (V) 200ml | (W) 150gm
- 1 Nos Halva Plate - Deep | (D) 4.25" | (H) 1.00" | (V) 150ml | (W) 135gm
- 1 Nos Ruby Spoon (Large) | (L) 15cm | (W) 55gm
- 1 Nos Ruby Fork (Small) | (L) 15cm | (W) 45gm
- 1 Nos Glass - Lassi | (V) 450ml | (H) 5.20" | (D) 3.25" | (W) 440gm
- Royal Gift Box Packaging (L) 38.5cm (B) 38.5cm (H) 12cm

Total Items 9 Total Weight 2.320kg



**ITEM CODE :** DSTHCT1207

**PRODUCT : BRONZE DINNER SET**

Box Contains

- 1 Nos Curve Thali | (D) 12.00" | (H) 1.25" | (W) 950gm
- 2 Nos Curve Bowl | (D) 3.25" | (H) 1.40" | (V) 150ml | (W) 180gm
- 1 Nos Halva Plate - Deep | (D) 4.25" | (H) 1.00" | (V) 150ml | (W) 135gm
- 1 Nos Regular Soup Spoon | (L) 14cm | (W) 60gm
- 1 Nos Dinner Fork | (L) 16cm | (W) 40gm
- 1 Nos Glass - Damru | (V) 275ml | (H) 3.75" | (D) 2.50" | (W) 270gm
- Royal Gift Box Packaging (L) 33.5cm (B) 33.5cm (H) 12cm

Total Items 7, Total Weight 1.800kg



**ITEM CODE** DSTHVI0146

**PRODUCT : BRONZE VINTAGE DINNER SET - OXIDIZED CARVING**

Box Contains

**OXIDISED CARVING**

- 1 Nos Thali | (D) 11.25" | (H) 1.25" | (W) 750gm
- 2 Nos Wati | (D) 3.40" | (H) 1.50" | (V) 160ml | (W) 130gm
- 1 Nos Halva Plate | (D) 4.25" | (H) 0.75" | (V) 150ml | (W) 120gm
- 1 Nos Regular Spoon | (L) 15cm | (W) 60gm
- 1 Nos Glass - Bengal | (V) 250ml | (H) 3.15" | (D) 3.00" | (W) 180gm
- Royal Gift Box Packaging (L) 33.5cm (B) 33.5cm (H) 12cm

Total Items 6, Total Weight 1.410kg



# Dinner Set



**ITEM CODE** DSTHLD0146

**PRODUCT : BRONZE DINNER SET - LASER DESIGNED**

Box Contains

**LASER DESIGN ON ALL ITEMS**

- 1 Nos Thali | (D) 11.25" | (H) 1.25" | (W) 750gm
- 2 Nos Wati | (D) 3.10" | (H) 1.25" | (V) 130ml | (W) 120gm
- 1 Nos Halva Plate | (D) 4.25" | (H) 0.75" | (V) 150ml | (W) 120gm
- 1 Nos Regular Spoon | (L) 15cm | (W) 60gm
- 1 Nos Glass - Bengal | (V) 250ml | (H) 3.15" | (D) 3.00" | (W) 180gm
- Royal Gift Box Packaging (L) 33.5cm (B) 33.5cm (H) 12cm

Total Items 6, Total Weight 1.390kg



**ITEM CODE** DSTHCS0146

**PRODUCT : BRONZE DINNER SET - CHECKS**

Box Contains

**CHECKS DESIGN ON ALL ITEMS**

- 1 Nos Thali | (D) 11.25" | (H) 1.25" | (W) 750gm
- 2 Nos Wati | (D) 3.10" | (H) 1.25" | (V) 130ml | (W) 120gm
- 1 Nos Halva Plate | (D) 4.25" | (H) 0.75" | (V) 150ml | (W) 120gm
- 1 Nos Regular Spoon | (L) 15cm | (W) 60gm
- 1 Nos Glass - Bengal | (V) 250ml | (H) 3.15" | (D) 3.00" | (W) 180gm
- Royal Gift Box Packaging (L) 33.5cm (B) 33.5cm (H) 12cm

Total Items 6, Total Weight 1.390kg

**ITEM CODE** DSITLY0004

**PRODUCT : BRONZE DINNER SET - ITALIAN**

Box Contains

- 1 Nos Plate - Rice (Deep) | (D) 10.00" | (H) 0.90" | (W) 710gm
- 1 Nos Bowl - Hotel | (D) 3.90" | (H) 1.60" | (V) 170ml | (W) 160gm
- 1 Nos Spoon - Dessert | (L) 15cm | (W) 60gm
- 1 Nos Glass - Kothi | (V) 250ml | (H) 3.25" | (D) 2.75" | (W) 180gm
- Royal Gift Box Packaging (L) 33.5cm (B) 33.5cm (H) 12cm

Total Items 4, Total Weight 1.100kg



**D - Diameter | L - Length | B - Breadth | H - Height | V - Volume | W - Weight**

# Dinner Set

**ITEM CODE** DSTHHC0146

**PRODUCT : BRONZE DINNER SET - ROYAL CARVING**

Box Contains

**ALL ITEMS ARE HAND CARVED**

- 1 Nos Thali | (D) 11.25" | (H) 1.25" | (W) 750gm
- 2 Nos Wati | (D) 3.10" | (H) 1.25" | (V) 130ml | (W) 120gm
- 1 Nos Halva Plate | (D) 4.25" | (H) 0.75" | (V) 150ml | (W) 120gm
- 1 Nos Regular Spoon | (L) 15cm | (W) 60gm
- 1 Nos Glass - Bengal | (V) 250ml | (H) 3.15" | (D) 3.00" | (W) 180gm
- Royal Gift Box Packaging (L) 33.5cm (B) 33.5cm (H) 12cm

Total Items 6, Total Weight 1.390kg



**ITEM CODE** DSTHHS0146

**PRODUCT : BRONZE DINNER SET - HAMMERED**

Box Contains

- 1 Nos Thali | (D) 11.25" | (H) 1.25" | (W) 750gm
- 2 Nos Wati | (D) 3.10" | (H) 1.25" | (V) 130ml | (W) 120gm
- 1 Nos Halva Plate | (D) 4.25" | (H) 0.75" | (V) 150ml | (W) 120gm
- 1 Nos Regular Spoon | (L) 15cm | (W) 60gm
- 1 Nos Glass - Bengal | (V) 250ml | (H) 3.15" | (D) 3.00" | (W) 180gm
- Royal Gift Box Packaging (L) 33.5cm (B) 33.5cm (H) 12cm

Total Items 6, Total Weight 1.390kg



**ITEM CODE** DSCTHS071200

**PRODUCT : BRONZE DINNER SET - HAMMERED**

Box Contains

**ALL ITEMS HAMMERED**

- 1 Nos Curve Thali | (D) 12.00" | (H) 1.25" | (W) 950gm
- 2 Nos Curve Bowl | (D) 3.25" | (H) 1.40" | (V) 150ml | (W) 180gm
- 1 Nos Halva Plate - Deep | (D) 4.25" | (H) 1.00" | (V) 150ml | (W) 135gm
- 1 Nos Regular Soup Spoon | (L) 14cm | (W) 60gm
- 1 Nos Fork - Dinner | (L) 16cm | (W) 40gm
- 1 Nos Glass - Damru | (V) 275ml | (H) 3.75" | (D) 2.50" | (W) 270gm
- Royal Gift Box Packaging (L) 33.5cm (B) 33.5cm (H) 12cm

Total Items 7, Total Weight 1.460kg



**D - Diameter | L - Length | B - Breadth | H - Height | V - Volume | W - Weight**

# Dinner Set



**ITEM CODE** DSPLTB0125

**PRODUCT : BRONZE DINNER SET - FEATHER**

Box Contains

- 1 Nos Buffet Plate | (D) 11.50" | (H) 0.60" | (W) 950gm
- 2 Nos Bowl - Hotel | (D) 3.40" | (H) 1.40" | (V) 130ml | (W) 140gm
- 1 Nos Regular Spoon | (L) 15cm | (W) 60gm
- 1 Nos Glass - Kothi (Slim) | (V) 250ml | (H) 3.40" | (D) 2.60" | (W) 180gm
- Royal Gift Box Packaging (L) 33.5cm (B)33.5cm (H)12cm

Total Items 5, Total Weight 1.330kg

**ITEM CODE :** DSTPMH1513

**PRODUCT : BRONZE DINNER SET - MAHARAJA**

Box Contains

- 1 Nos Thali - Patti | (D) 9.60" | (H) 1.90" | (W) 550gm
- 8 Nos Bowl | (D) 2.90" | (H) 1.10" | (V) 80ml | (W) 90gm
- 1 Nos Halva Plate | (D) 4.25" | (H) 0.75" | (V) 150ml | (W) 120gm
- 1 Nos Glass - Bombay | (V) 270ml | (H) 3.75" | (D) 3.00" | (W) 220gm
- 1 Nos Glass - Pipe | (V) 250ml | (H) 3.25" | (D) 2.75" | (W) 180gm
- 1 Nos Glass - Pipe Juice | (V) 150ml | (H) 2.75" | (D) 2.25" | (W) 150gm
- Royal Gift Box Packaging (L) 38.5cm (B) 38.5cm (H)12cm

Total Items 13, Total Weight 1.590kg



**D - Diameter | L - Length | B - Breadth | H - Height | V - Volume | W - Weight**



# Dinner Set

ITEM CODE : DSTHRJ1813

PRODUCT : BRONZE DINNER SET - RAJWADI

Box Contains

- 1 Nos Thali | (D) 14.50" | (H) 1.50" | (W) 1500gm
- 6 Nos Wati | (D) 3.00" | (H) 1.25" | (V) 100ml | (W) 110gm
- 1 Nos Chatni Wati (Large) | (D) 2.50" | (H) 1.10" | (V) 50ml | (W) 80gm
- 1 Nos Halva Plate | (D) 3.90" | (H) 0.60" | (V) 150ml | (W) 100gm
- 1 Nos Regular Spoon | (L) 15cm | (W) 60gm
- 1 Nos Baby Regular Spoon | (L) 14cm | (W) 50gm
- 1 Nos Glass - Pipe | (V) 250ml | (H) 3.25" | (D) 2.75" | (W) 180gm
- 1 Nos Napkin Ring | (D) 2.20" | (W) 50gm
- Royal Gift Box Packaging (L) 38.5cm (B) 38.5cm (H) 12cm

Total Items 13 Total Weight 2.600kg



D - Diameter | L - Length | B - Breadth | H - Height | V - Volume | W - Weight



# Dinner Set



ITEM CODE : DSPLRJ1813

PRODUCT : BRONZE DINNER SET - RAJWADI

Box Contains

- 1 Nos Plate | (D) 14.75" | (H) 0.90" | (W) 1550gm
- 6 Nos Bowl | (D) 3.10" | (H) 1.15" | (V) 100ml | (W) 110gm
- 1 Nos Chatni Wati (Large) | (D) 2.50" | (H) 1.10" | (V) 50ml | (W) 80gm
- 1 Nos Halva Plate | (D) 3.90" | (H) 0.60" | (V) 150ml | (W) 100gm
- 1 Nos Regular Spoon | (L) 15cm | (W) 60gm
- 1 Nos Baby Regular Spoon | (L) 14cm | (W) 50gm
- 1 Nos Glass - Chandi | (V) 250ml | (H) 3.25" | (D) 3.00" | (W) 180gm
- 1 Nos Napkin Ring | (D) 2.20" | (W) 50gm
- Royal Gift Box Packaging (L) 38.5cm (B) 38.5cm (H) 12cm

Total Items 13, Total Weight 2.600kg



D - Diameter | L - Length | B - Breadth | H - Height | V - Volume | W - Weight

# Dinner Set

**ITEM CODE :** DSTHCB0804

**PRODUCT : BRONZE BABY SET | 4 ITEMS**

Box Contains

- 1 Nos Curve Quarter Plate | (D) 7.25" | (H) 1.40" | (W) 600gm
- 1 Nos Curve Bowl (Small) | (D) 2.25" | (H) 1.15" | (V) 80ml | (W) 115gm
- 1 Nos Regular Baby Soup Spoon | (L) 15cm | (W) 60gm
- 1 Nos Glass - Damru | (V) 275ml | (H) 3.75" | (D) 2.50" | (W) 270gm
- Royal Gift Box Packaging (L) 23.5cm (B) 23.5cm (H) 12cm

Total Items 4, Total Weight 0.720kg



**ITEM CODE :** DSTHBS0104

**PRODUCT : BRONZE BABY DINNER SET**

Box Contains

- 1 Nos Thali | (D) 7.50" | (H) 1.10" | (W) 360gm
- 1 Nos Bowl | (D) 3.10" | (H) 1.15" (V) 100ml | (W) 110gm
- 1 Nos Baby Regular Spoon | (L) 14cm | (W) 50gm
- 1 Nos Glass - Kothi Juice | (V) 150ml | (H) 2.75" | (D) 2.25" | (W) 150gm
- Premium Gift Box Packaging (L) 23.5cm (B) 23.5cm (H) 12cm

Total Items 4, Total Weight 0.720kg



**ITEM CODE :** DSTHBS0104

**PRODUCT : BRONZE BABY DINNER SET**

Box Contains

- 1 Nos Plate | (D) 8.50" | (H) 1.00" | (W) 425gm
- 1 Nos Bowl | (D) 3.10" | (H) 1.15" | (V) 100ml | (W) 110gm
- 1 Nos Baby Regular Spoon | (L) 14cm | (W) 50gm
- 1 Nos Glass - Loti (Small) | (V) 180ml | (H) 2.40" | (D) 2.50" | (W) 180gm
- Premium Gift Box Packaging (L) 23.5cm (B) 23.5cm (H) 12cm

Total Items 4, Total Weight 0.780kg



**D - Diameter | L - Length | B - Breadth | H - Height | V - Volume | W - Weight**



# Breakfast Set

ITEM CODE BRFSP0036

## PRODUCT : BRONZE BREAKFAST SET

Box Contains

- 6 Nos Plate | (D) 10.25" | (H) 0.75" | (W) 600gm
- 6 Nos (Horeca) Hotel Bowl | (D) 3.40" | (H) 1.40" | (V) 130ml | (W) 140gm
- 6 Nos Regular Spoon | (L) 15cm | (W) 60gm
- 6 Nos Butter Knife | (L) 20cm | (W) 70gm
- 6 Nos Dinner Fork | (L) 16cm | (W) 40gm
- 6 Nos Glass - Pipe | (V) 250ml | (H) 3.25" | (D) 2.75" | (W) 180gm
- Royal Gift Box Packaging (L) 38cm (B) 38cm (H) 38cm

Total Items 36, Total Weight 13.200kg



D - Diameter | L - Length | B - Breadth | H - Height | V - Volume | W - Weight

ITEM CODE EXPLTS0061

PRODUCT : BRONZE GALA LUNCH SET 68

## Lunch Set

### THALI SET

- 6 Nos Thali | (D) 11.25" | (H) 1.25" | (W) 750gm
- 12 Nos Wati | (D) 3.40" | (H) 1.50" | (V) 160ml | (W) 130gm
- 6 Nos Halva Plate | (D) 4.25" | (H) 0.75" | (V) 150ml | (W) 120gm
- 6 Nos Regular Spoon | (L) 15cm | (W) 60gm
- 6 Nos Glass - Bengal | (V) 250ml | (H) 3.15" | (D) 3.00" | (W) 180gm

### ICE CREAM SET (LARGE)

- 6 Nos Ice Cream Bowl (Large) | (D) 3.75" | (H) 2.25" | (V) 150ml | (W) 230gm
- 6 Nos Ice Cream Spoon | (L) 13cm | (W) 40gm

- 6 Nos Dinner Fork | (L) 16cm | (W) 40gm
- 6 Nos Glass - Buttermilk | (V) 270ml | (H) 3.75" | (D) 3.00" | (W) 230gm
- 1 Nos Handi | (V) 750ml | (D) 5.50" | (H) 2.50" | (W) 800gm
- 1 Nos Handi with Lid | (V) 1000ml | (D) 6.00" | (H) 2.60" | (W) 1150gm
- 1 Nos Handi with Lid | (V) 1500ml | (H) 2.75" | (D) 7.25" | (W) 1550gm
- 1 Nos Serving Spoon - Curve (Large) | (L) 23cm | (W) 120gm
- 1 Nos Serving Spoon - Straight (Large) | (L) 22cm | (W) 120gm
- 1 Nos Rice Serving Spoon | (L) 21cm | (W) 140gm
- 1 Nos Pipe Jug (Large) | (V) 1500ml | (D) 5.25" | (H) 6.75" | (W) 1350gm
- 1 Nos Buffet Plate | (D) 8.25" | (H) 0.40" | (W) 480gm
- Royal Gift Box Packaging

Total Items 68, Total Weight 16.910kg



D - Diameter | L - Length | B - Breadth | H - Height | V - Volume | W - Weight



# Dinner Set

## ITEM CODE

PRODUCT : BRONZE DINNER SET - GALA | 61

## PLATE SET

- 6 Nos Plate | (D) 12.10" | (H) 0.75" | (W) 800gm
- 12 Nos Bowl | (D) 3.75" | (H) 1.30" | (V) 150ml | (W) 130gm
- 6 Nos Halva Plate | (D) 4.25" | (H) 0.75" | (V) 150ml | (W) 120gm
- 6 Nos Regular Spoon | (L) 15cm | (W) 60gm
- 6 Nos Glass - Chandi | (V) 250ml | (H) 3.25" | (D) 3.00" | (W) 180gm

## SOUP SET (LARGE)

- 6 Nos Plate | (D) 6.25" | (H) 0.90" | (W) 250gm
- 6 Nos Soup Bowl (Large) | (D) 5.25" | (H) 1.75" | (V) 350ml | (W) 250gm
- 6 Nos Soup Spoon - Deep | (L) 14cm | (W) 100gm
- 6 Nos Quarter Plate | (D) 7.50" | (H) 0.75" | (W) 370gm
- 1 Nos Jug - Damru | (V) 1500ml | (D) 4.00" | (H) 7.20" | (W) 1350gm
- Royal Gift Box Packaging

Total Items 61, Total Weight 15.170kg



D - Diameter | L - Length | B - Breadth | H - Height | V - Volume | W - Weight



# Royal Set

**ITEM CODE** DSMNG00013

**PRODUCT : BRONZE PLATTER SET - MANGO TAJ**

Box Contains

- 2 Nos Mango Platter - Traditional Set in 2 Parts

## Part A

(L) 14.50" (B) 7.50" (H) 5\*0.60" (W) 1300gm

## Part B

(L) 16.50" (B) 7.75" (H) 0.60" (W) 1200gm

- 1 Nos Mango Starter Plate | (D) 10.50" - 5.25" | (H) 0.50" | (W) 780gm
- 5 Nos Bowl - Mango | (D) 3.40" | (H) 1.50" | (V) 150ml | (W) 150gm
- 1 Nos Wati - Chatni (Small) | (D) 2.00" | (H) 1.10" | (V) 40ml | (W) 40gm
- 1 Nos Dinner Fork | (L) 16cm | (W) 40gm
- 1 Nos Glass - Hotel | (V) 350ml | (H) 3.75" | (D) 3.40" | (W) 300gm
- 1 Nos Napkin Ring | (D) 2.20" | (W) 50gm
- Royal Gift Box Packaging (L) 38.5cm (B) 38.5cm (H) 12cm

Total Items 12, Total Weight 4.500kg



D - Diameter | L - Length | B - Breadth | H - Height | V - Volume | W - Weight

# Royal Set

ITEM CODE DSSQUR0013

## PRODUCT : BRONZE DINNER SET - SQUARE WOODS

Box Contains

- 1 Nos Plate - Square | (D) 11.00" | (H) 0.50" | (W) 2200gm
- 4 Nos Wati with Handle | (D) 3.00" | (H) 1.40" | (V) 100ml | (W) 180gm
- 3 Nos Wati - Chatni (Large) | (D) 2.50" | (H) 1.10" | (V) 50ml | (W) 80gm
- 1 Nos Regular Spoon | (L) 15cm | (W) 60gm
- 1 Nos Dinner Fork | (L) 16cm | (W) 40gm
- 1 Nos Butter Knife | (L) 20cm | (W) 70gm
- 1 Nos Glass - Bombay | (V) 280ml | (H) 3.75" | (D) 3.00" | (W) 220gm
- 1 Nos Napkin Ring | (D) 2.20" | (W) 50gm
- Royal Gift Box Packaging (L) 33.5cm (B) 33.5cm (H) 12cm

Total Items 13, Total Weight 3.600kg



D - Diameter | L - Length | B - Breadth | H - Height | V - Volume | W - Weight



# Serving Set



ITEM CODE : SERVS0006

## PRODUCT : BRONZE SERVING SET

Box Contains

- 2 Nos Handi with Lid | (V) 1000ml | (H) 6.00" | (D) 2.60" | (W) 1150gm
- 1 Nos Rice Plate - Deep | (D) 10.00" | (H) 0.90" | (W) 710gm
- 1 Nos Serving Spoon - Curve (Large) | (L) 23cm | (W) 120gm
- 1 Nos Serving Spoon - Straight (Large) | (L) 22cm | (W) 120gm
- 1 Nos Serving Spoon - Rice | (L) 21cm | (W) 140gm
- Royal Gift Box Packaging (L) 33.5cm (B) 33.5cm (H) 12cm

Total Items 6, Total Weight 3.360kg

ITEM CODE DAHIBL0005

## PRODUCT : BRONZE DAHI BHALLA SET

Box Contains

- 1 Nos Box - Nasta | (D) 4.75" | (H) 1.90" | (V) 250ml | (W) 450gm
- 1 Nos Baby Regular Spoon | (L) 14cm | (W) 50gm
- Royal Gift Box Packaging (L) 16.5cm (B) 8.89cm (H) 16.5cm

Total Items 2, Total Weight 0.500kg



D - Diameter | L - Length | B - Breadth | H - Height | V - Volume | W - Weight



# Set



**ITEM CODE** SOUPSS3490

**PRODUCT : BRONZE SOUP SET**

Box Contains

- 1 Nos Plate | (D) 6.25" | (H) 0.90" | (W) 250gm
- 1 Nos Soup Bowl (Small) | (D) 4.90" | (H) 1.50" | (V) 270ml | (W) 190gm
- 1 Nos Regular Baby Soup Spoon | (L) 15cm | (W) 60gm
- Premium Gift Box Packaging (L) 24.5cm (B) 26.5cm (H) 13cm

Total Items 3, Total Weight 0.490kg



**ITEM CODE** SOUPLS3600

**PRODUCT : BRONZE SOUP SET**

Box Contains

- 1 Nos Plate | (D) 6.25" | (H) 0.90" | (W) 250gm
- 1 Nos Soup Bowl (Large) | (D) 5.25" | (H) 1.75" | (V) 350ml | (W) 250gm
- 1 Nos Soup Spoon - Deep | (L) 14cm | (W) 100gm
- Premium Gift Box Packaging (L) 33.5cm (B) 33.5cm (H) 12cm

Total Items 3, Total Weight 0.600kg



**ITEM CODE** SOUPCS3600

**PRODUCT : BRONZE CARVING SOUP SET**

Box Contains

- 1 Nos Plate | (D) 6.25" | (H) 0.90" | (W) 250gm
- 1 Nos Soup Bowl (Carving) | (D) 5.25" | (H) 1.75" | (V) 350ml | (W) 260gm
- 1 Nos Soup Spoon - Deep | (L) 14cm | (W) 100gm
- Premium Gift Box Packaging (L) 33.5cm (B) 33.5cm (H) 12cm

Total Weight 0.600kg, Total Items 3



**D - Diameter | L - Length | B - Breadth | H - Height | V - Volume | W - Weight**

# Set



**ITEM CODE** DSDOSA4950

## PRODUCT : BRONZE DOSA SET

Box Contains

- 1 Nos Meditation / Om Bowl with Lid (Large) | (V) 1250ml | (D) 5.50" | (H) 3.00" | (W) 1250gm
- 1 Nos Wooden Stick
- Premium Gift Box Packaging (L) 24.5cm (B) 25cm (H) 9.5cm

Total Items 2, Total Weight 1.400kg



**ITEM CODE** PIZPLT3920

## PRODUCT : BRONZE PIZZA PLATTER SET

Box Contains

- 1 Nos Plate - Buffet | (D) 10.10" | (H) 0.50" | (W) 800gm
- 1 Nos Butter Knife | (L) 20cm | (W) 70gm
- 1 Nos Dinner Fork | (L) 16cm | (W) 40gm
- Premium Gift Box Packaging (L) 33cm (B) 6.35cm (H) 33cm

Total Items 3, Total Weight 0.920kg



**ITEM CODE** DSBFST2485

## PRODUCT : BRONZE BREAKFAST SET

Box Contains

- 1 Nos Plate | (D) 8.50" | (H) 1.00" | (W) 425gm
- 1 Nos Regular Spoon | (L) 15cm | (W) 60gm
- Premium Gift Box Packaging (L) 22.86cm (B) 10.16cm (H) 22.86cm

Total Items 2, Total Weight 0.485kg



**D - Diameter | L - Length | B - Breadth | H - Height | V - Volume | W - Weight**

# Set

**ITEM CODE** KHICH2560

**PRODUCT : BRONZE KHICHDI SET**

Box Contains

- 1 Nos Tasla | (D) 7.25" | (H) 1.90" | (V) 700ml | (W) 500gm
- 1 Nos Regular Soup Spoon | (L) 14cm | (W) 60gm
- Premium Gift Box Packaging (L) 22.86cm (B) 10.16cm (H) 22.86cm

Total Items 2, Total Weight 0.560kg



**ITEM CODE** FRUITB020265

**PRODUCT : BRONZE FRUIT BOWL**

Box Contains

- 1 Nos Thardi | (D) 5.00" | (H) 1.50" | (V) 320ml | (W) 225gm
- 1 Nos Fork - Fruit | (L) 15cm | (W) 40gm
- Premium Gift Box Packaging (L) 16.5cm (B) 8.89cm (H) 16.5cm

Total Items 2, Total Weight 0.265kg



**ITEM CODE** SNACBX2500

**PRODUCT : BRONZE SNACKS SET**

Box Contains

- 1 Nos Box - Nasta | (D) 4.75" | (H) 1.90" | (V) 250ml | (W) 450gm
- 1 Nos Baby Regular Spoon | (L) 14cm | (W) 50gm
- Premium Gift Box Packaging (L) 16.5cm (B) 8.89cm (H) 16.5cm

Total Items 2, Total Weight 0.500kg



**D - Diameter | L - Length | B - Breadth | H - Height | V - Volume | W - Weight**



# Set



**ITEM CODE** STRTRS0005

## **PRODUCT : BRONZE STARTER SET**

Box Contains

- 1 Nos Serving Plate - Square | (D) 7.50" | (H) 0.75" | (W) 880gm
- 1 Nos Plate - Buffet | (D) 10.10" | (H) 0.50" | (W) 800gm
- 1 Nos Fork - Dinner | (L) 16cm | (W) 40gm
- 1 Nos Dessert Spoon | (L) 15cm | (W) 60gm
- 1 Nos Butter Knife | (L) 20cm | (W) 70gm
- Premium Gift Box Packaging (L) 34cm (B) 34cm (H) 12cm

Total Items 5, Total Weight 3.180kg



**ITEM CODE** PASTAS041440

## **PRODUCT : BRONZE PASTA PLATTER SET**

Box Contains

- 1 Nos Plate - Badam | (D) 7.50" | (H) 0.60" | (W) 850gm
- 1 Nos Plate - Buffet (Deep) | (D) 10.00" | (H) 0.90" | (W) 710gm
- 1 Nos Spoon - Hotel | (L) 14cm | (W) 40gm
- 1 Nos Fork - Hotel | (L) 14cm | (W) 40gm
- Premium Gift Box Packaging (L) 34cm (B) 34cm (H) 12cm

Total Items 4, Total Weight 1.440kg



**ITEM CODE** PASTRY020140

## **PRODUCT : BRONZE PASTRY PLATTER SET**

Box Contains

- 1 Nos Buffet Plate | (D) 7.25" | (H) 0.40" | (W) 350gm
- 1 Nos Fork - Dinner | (L) 16cm | (W) 40gm
- Premium Gift Box Packaging (L) 24.5cm (B) 26.5cm (H) 13cm

Total Items 2. Total Weight 0.140kg

**D - Diameter | L - Length | B - Breadth | H - Height | V - Volume | W - Weight**

# Set



**ITEM CODE** ICSETS0002

## PRODUCT : BRONZE ICE CREAM SET

Box Contains

- 1 Nos Ice Cream Bowl (Small) | (D) 3.40" | (H) 1.75" | (V) 100ml | (W) 180gm
- 1 Nos Ice Cream Spoon | (L) 13cm | (W) 40gm
- Premium Gift Box Packaging (L) 22.3cm (B) 7.3cm (H) 15.24cm

Total Items 2, Total Weight 0.220kg



**ITEM CODE** ICSETL0002

## PRODUCT : BRONZE ICE CREAM SET

Box Contains

- 1 Nos Ice Cream Bowl (Large) | (D) 3.75" | (H) 2.25" | (V) 150ml | (W) 230gm
- 1 Nos Ice Cream Spoon | (L) 13cm | (W) 40gm
- Premium Gift Box Packaging (L) 16.51cm (B) 8.89cm (H) 16.51cm

Total Items 2, Total Weight 0.270kg



**ITEM CODE** JUGSET0003

## PRODUCT : BRONZE JUG SET

Box Contains

- 1 Nos Pipe Jug (Small) with Lid | (V) 900ml | (D) 4.25" | (H) 5.50" | (W) 980gm
- 2 Nos Glass - Pipe | (V) 250ml | (H) 3.25" | (D) 2.75" | (W) 180gm
- Premium Gift Box Packaging

Total Items 3, Total Weight 1.340kg



**D - Diameter | L - Length | B - Breadth | H - Height | V - Volume | W - Weight**

# Set

**ITEM CODE** KITCHN022300

**PRODUCT : BRONZE KITCHEN SET**

Box Contains

- 1 Nos Tasla | (D) 7.25" | (H) 1.90" | (V) 700ml | (W) 500gm
- 1 Nos Regular Soup Spoon | (L) 14cm | (W) 60gm
- Royal Gift Box Packaging (L) 22.86cm (B) 10.16cm (H) 22.86cm

Total Items 2, Total Weight 0.560kg



**ITEM CODE** VALENT020520

**PRODUCT : BRONZE VALENTINE SET**

Box Contains

- 1 Nos Glass - Lassi | (V) 450ml | (H) 5.20" | (D) 3.25" | (W) 440gm
- 1 Nos Hotel Coffee Spoon | (L) 20cm | (W) 60gm
- Premium Gift Box Packaging (L) 24.5cm (B) 26.5cm (H) 13cm

Total Items 2, Total Weight 0.520kg



**D - Diameter | L - Length | B - Breadth | H - Height | V - Volume | W - Weight**



# Pooja Set

**ITEM CODE** POOJAR0006

## PRODUCT : BRONZE POOJA SET

Box Contains

- 1 Nos Plate - Tarbhana (Pooja Thali) | (D) 8.00" | (H) 1.10" | (W) 460gm
- 1 Nos Spoon - Achamani | (L) 13cm | (W) 65gm
- 1 Nos Lota - Pooja | (V) 750ml | (D) 3.75" | (H) 4.25" | (W) 560gm
- 1 Nos Dhup Stand | (D) 0.90" | (H) 0.50" | (W) 60gm
- 1 Nos Divi - 5 Mukhi (Large) | (D) 3.25" | (H) 2.50" | (W) 110gm
- 1 Nos Glass - Panch Patra | (V) 150ml | (D) 2.90" | (H) 2.50" | (W) 160gm
- Pooja Gift Box Packaging (L) 25cm (B) 25cm (H) 12cm

Total Items 6, Total Weight 1.400kg



**ITEM CODE** POOJAD0006

## PRODUCT : BRONZE POOJA SET

Box Contains

- 1 Nos Plate - Tarbhana (Pooja Thali) | (D) 8.00" | (H) 1.10" | (W) 460gm
- 1 Nos Spoon - Achamani | (L) 13cm | (W) 65gm
- 1 Nos Dhup Stand | (D) 0.90" | (H) 0.50" | (W) 60gm
- 1 Nos Divi - 5 Mukhi (Large) | (D) 3.25" | (H) 2.50" | (W) 110gm
- 1 Nos Glass - Loti (Belly) | (V) 180ml | (D) 2.50" | (H) 2.40" | (W) 180gm
- 1 Nos Glass - Panch Patra | (V) 150ml | (D) 2.90" | (H) 2.50" | (W) 160gm
- Pooja Gift Box Packaging (L) 25cm (B) 25cm (H) 12cm

Total Items 6, Total Weight 1.035kg



**ITEM CODE** POOJAM0006

## PRODUCT : BRONZE POOJA SET

Box Contains

- 1 Nos Plate - Tarbhana (Pooja Thali) | (D) 8.00" | (H) 1.10" | (W) 460gm
- 1 Nos Wati - Chatni (Small) | (D) 2.00" | (H) 1.10" | (V) 40ml | (W) 40gm
- 1 Nos Spoon - Achamani | (L) 13cm | (W) 65gm
- 1 Nos Loti (Small) | (D) 3.00" | (H) 2.50" | (V) 220ml | (W) 80gm
- 1 Nos Dhup Stand | (D) 0.90" | (H) 0.50" | (W) 60gm
- 1 Nos Divi - 5 Mukhi (Small) | (D) 1.75" | (H) 1.50" | (W) 65gm
- Pooja Gift Box Packaging (L) 25cm (B) 25cm (H) 12cm

Total Items 6, Total Weight 0.560kg



**D - Diameter | L - Length | B - Breadth | H - Height | V - Volume | W - Weight**

# Wellness Set



**ITEM CODE** WLNESS0002

## **PRODUCT : BRONZE WELLNESS KIT**

Box Contains

- 1 Nos Gausha (Small) | (D) 2.75" | (W) 90gm
- 1 Nos Massager (Small) | (H) 5.50" | (W) 110gm
- 1 Nos Comb | (L) 3.90" | (H) 0.10" | (W) 100gm
- Wellness Box Packaging (L) 17cm (B) 17cm (H) 6cm

Total Items 3, Total Weight 0.320kg



**ITEM CODE** WLNESS0001

## **PRODUCT : BRONZE MASSAGER**

Box Contains

- 1 Nos Massager (Medium) | (H) 5.50" | (W) 190gm
- 1 Nos Ointment Ghee 50ml
- Wellness Box Packaging (L) 16.5cm (B) 9cm (H) 16.5cm

Total Items 2, Total Weight 0.200kg



**ITEM CODE** OMBOWLL0001

## **PRODUCT : BRONZE MEDITATION BOWL (LARGE) - OM BOWL**

Box Contains

- 1 Nos Meditation / Om Bowl with Lid (Large) | (V) 1250ml | (D) 5.50" | (H) 3.00" | (W) 1250gm
- 1 Nos Wooden Stick
- Wellness Gift Box Packaging (L) 24.5cm (B) 25cm (H) 9.5cm

Total Items 2, Total Weight 1.400kg



**ITEM CODE** OMBWLM002

## **PRODUCT : BRONZE MEDITATION BOWL (Medium) - OM BOWL**

Box Contains

- 1 Nos Meditation / Om Bowl with Lid (Medium) | (V) 700ml | (D) 5.25" | (H) 2.40" | (W) 1050gm
- 1 Nos Wooden Stick
- Wellness Gift Box Packaging (L) 24.5cm (B) 25cm (H) 9.5cm

Total Items 2, Total Weight 1.200kg

**D - Diameter | L - Length | B - Breadth | H - Height | V - Volume | W - Weight**

## Why Bronze is Good for Eating Food

- 1** Ayurvedic Benefits: In Ayurveda, bronze (Kansa) is believed to balance the body's doshas Vata, pitta and kapha and enhance immunity and digestion.
- 2** Alkalizing Effect: Bronze helps in alkalizing food, reducing acidity and improving gut health.
- 3** Antibacterial properties: Like copper and brass, pure bronze can help inhibit bacterial growth, keeping food safer.
- 4** Boosts Immunity: Regular use of bronze utensils is said to boost red blood cells production and improve hemoglobin levels.
- 5** Long-lasting and Sustainable: Bronze utensils are durable and last for generations, making them a better eco-friendly choice than disposable materials.

## Cleaning Steps

### 1. Prepare the Cleaning Solution



#### Lemon Juice

Squeeze the juice of the termite lemon (or regular lemon) into a bowl. The acidity in lemon helps to break down tarnish.



#### Vinegar

Add an equal amount of white vinegar to the lemon juice. This combination will enhance the cleaning power.



#### Baking Soda

Gradually add baking soda to the mixture. It will fizz and bubble, which helps lift - tarnish and grime. Use about 1-2 table-spoons of baking soda. - -

### 2. Apply the Mixture

Dip a soft cloth or sponge into the cleaning solution.

Gently rub the bronze utensil with the cloth, focusing on tarnished areas. Be careful not to scrub too hard, as this can scratch the surface.

### 3. Let it Sit

For heavily tarnished items, let the mixture sit on the surface for about 10-15 minutes to allow the acids to work on the tarnish.

### 4. Rinse Thoroughly

After cleaning, rinse the bronze utensil under warm water to remove any residue from the cleaning solution.

### 5. Dry and Polish

Use a soft, dry cloth to thoroughly dry the utensil. This will help prevent water spots.

If desired, you can use a small amount of Pitambari powder to polish the bronze further. Follow the instructions on the Pitambari packaging for best results.

### 6. Final Touch

Buff the utensil with a clean, dry cloth to restore its shine.

### MATERIALS NEEDED



Termite lemon (or regular lemon)



Pitambari (a commercial cleaning powder, if available)



White Vinegar



Baking Soda



Soft Cloth or Sponge



Water



Bowl for Mixing

Always test a small, inconspicuous area first to ensure that the cleaning method does not damage the finish.

Regular cleaning and maintenance can help keep your bronze utensils looking their best.

Avoid using abrasive materials that can scratch the bronze.

By following these steps, you should be able to effectively clean and restore your bronze utensils using natural ingredients!



# Packaging



**POOJA GIFT BOX**  
L 23 / B 23 / H 11.5 / W 340gm



**PREMIUM GIFT BOX**  
L 33.5 / B 33.5 / H 10.5 / W 430gm  
L 26 / B 23.5 / H 12.5 / W 310gm



**WELLNESS GIFT BOX**  
L 24.5 / B 24.9 / H 9 / W 340gm



**ROYAL GIFT BOX**  
L 33.5 / B 33.5 / H 33.5 / H 10.5 / W 530gm  
L 38.5 / B 38.5 / H 33.5 / H 11.5 / W 750gm  
L 23.5 / B 23.5 / H 11.5 / W 340gm



# KANSYAM



7, Mahalaxmi Municipal Market,  
Beside SBI Bank, Suvidha 4 Rasta,  
Paldi, Ahmedabad 380007.

☎ +91 84879 91987  
🌐 [www.kansyam.com](http://www.kansyam.com)  
✉ [info@kansyam.com](mailto:info@kansyam.com)

📷 [kansyam\\_bronze](#)  
📺 Kansyam Bronze



for Catalogue